

## SY® Power Connectors and Contact Tips

The **SY® Power Connector** is designed for use as a power quick-disconnect in automotive, RV, and marine applications, as well as other high-current DC charging circuits.

SY® connector housings are genderless and mechanically keyed by color—connectors of the same color and size are mated together by simply flipping one over. The keyed design visually and physically prevents accidental cross-mating.

### Features

- UL rated for 600 volts
- Single-piece impact-resistant Polycarbonate Lexan® housings
- Superior tolerance to extreme cold and heat
- Solid copper contacts are plated with 99.9% pure silver for maximum conductivity with low resistance
- Unique “ramplock” action allows contacts to be easily mated yet securely locked in position
- Integral tempered 301 stainless steel springs maintain constant pressure on the contacts to ensure consistent, low resistance connections and resist vibration arcing
- Self cleaning design keeps conductive surfaces corrosion-free
- Heat-treated, flared barrels readily accept fine stranded wire

### Applications

- Marine, auto, and RV accessories
- Jumper cables and harnesses
- Equipment and Service Trucks
- Allows one connection system to meet multiple needs



### Contacts



50 Amp		Gauge
Part Number		
SY50-TIP-10		10-12 gauge
SY50-TIP-8		8 gauge
SY50-TIP-6		6 gauge

120 Amp		Gauge
Part Number		
SY120-TIP-6		6 gauge
SY120-TIP-4		4 gauge
SY120-TIP-2		2 gauge

175 Amp		Gauge
Part Number		
SY175-TIP-6		6 gauge
SY175-TIP-4		4 gauge
SY175-TIP-2		2 gauge
SY175-TIP-1		1 gauge
SY175-TIP-1/0		1/0 gauge

350 Amp		Gauge
Part Number		
SY350-TIP-1/0		1/0 gauge
SY350-TIP-2/0		2/0 gauge
SY350-TIP-3/0		3/0 gauge
SY350-TIP-4/0		4/0 gauge

### Housings

#### 50 Amp

Part Number	Color
SY50-GRY	Gray
SY50-RED	Red
SY50-BLK	Black
SY50-BLU	Blue
SY50-YEL	Yellow

#### 120 Amp

Part Number	Color
SY120-GRY	Gray
SY120-RED	Red
SY120-BLU	Blue

#### 175 Amp

Part Number	Color
SY175-GRY	Gray
SY175-BLU	Blue
SY175-ORG	Orange
SY175-YEL	Yellow
SY175-RED	Red

#### 350 Amp

Part Number	Color
SY350-GRY	Gray
SY350-BLU	Blue
SY350-RED	Red
SY350-GRN	Green
SY350-ORG	Orange
SY350-YEL	Yellow



**Power Connector Service Kit**  
available on page 88

## Custom Power Connector Cables, Protective Covers



### Protective SY Covers

#### Black Polycarbonate Cover

Housing Size	Part Number
175 Amp	STC905
350 Amp	STC906

#### Black Rubber Cover

Housing Size	Part Number
350 Amp	STC902-BLK
175 Amp	STC903-BLK
50 Amp	STC904-BLK

#### Red Rubber Cover

Housing Size	Part Number
350 Amp	STC902-RED
175 Amp	STC903-RED
50 Amp	STC904-RED



### Custom Power Connector Cables

Polar Wire Cables and Harness Systems are built with premium cold weather **Arctic Ultraflex Blue**<sup>®</sup> and **Arctic Superflex Blue**<sup>®</sup> flexible wire.

Get the specific cable configurations you need, properly crimped and shrink sealed for best performance and longevity. Quality checked at every step. Fast turnaround. Call us to order!





## 400 Amp Single Pin Inline and Panel Mount Connectors

### CLS Series Single Pin Inline Connectors

are designed for maximum resistance to excessive torque loading. Constructed of weatherproof materials.

- NEMA 3R and NEMA 4R rated for wet locations
- UL Listed and CSA Certified
- Accepts up to 400A/600V

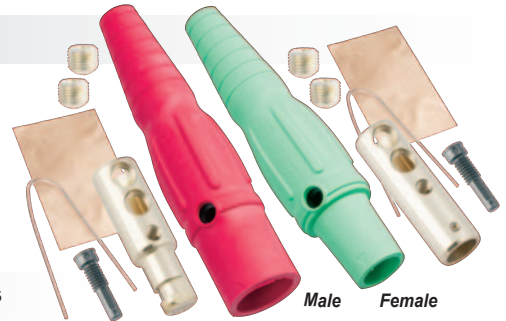
### CL Series Single Pin Panel Mount Connectors

feature super tough nylon housings that won't chip or crack under extreme temperature and impact conditions.

- Stud Post or Set Screw style
- Self-threading screws
- Accepts up to 400A/600V
- Mounts with self-tapping stainless screws, eliminates lock washers and nuts

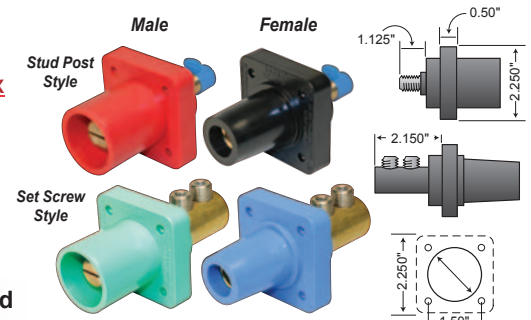
### 400A Inline Connectors

Size AWG	Male Part Number	Female Part Number
6-2	CLS2MB-X	CLS2FB-X
2-2/0	CLS20MB-X	CLS20FB-X
2/0-4/0	CLS40MB-X	CLS40FB-X



### 400A Panel Mount Connectors

Size AWG	Male Part Number	Female Part Number
<b>Stud Post Style</b>		
2/0-4/0	CL40MRSB-X	CL40FRSB-X
<b>Set Screw Style</b>		
2-2/0	CL20MRB-X	CL20FRB-X
2/0-4/0	CL40MRB-X	CL40FRB-X



### Protective Covers with Lanyard



Part Number CL40FC-X Fits Female Connector  
Part Number CL40MC-X Fits Male Connector

#### Available colors:

- Black (A)
- Blue (D)
- Orange (G)
- White (B)
- Green (E)
- Yellow (H)
- Red (C)
- Brown (F)

**TO ORDER**, add desired color code (X) to the part number. Example: CLS2MB-C

### Custom CLS Cables

We build **Arctic Ultraflex Blue®** pin connector cables to your exact specifications. Rigorous quality. Lifetime warranty. Call us today!



## 400 Amp Couplers and T Connectors



Hard 3-Line Tap Male to 3 Females  
Part Number CA3F-X



Reverse Hard 3-Line Tap Female to 3 Males  
Part Number CA3M-X  
(White (B) and green (E) only)



Soft 3-Line Tap Male to 3 Females  
Part Number CA3FST-X



Paralleling T Female to 2 Males  
Part Number CPT-X



Tapping T Male to 2 Females  
Part Number CTT-X

#### Available colors:

- Black (A)
- Red (C)
- Green (E)
- White (B)
- Blue (D)

**TO ORDER**, add desired color code (X) to the part number. Example: CA3F-E

# 150 Amp Single Pin Inline and Panel Mount Connectors

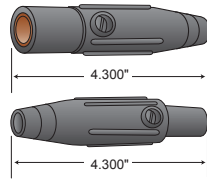
**CLM Series Inline Connectors** have a Santoprene housing. Nylon retaining screw provides maximum fixation. Withstands heavy torque loading. Made of weatherproof materials.

- NEMA 3R and NEMA 4R rated for wet locations
- UL Listed and CSA Certified
- Accepts up to 150A/600V

**CLM Series Panel Mount Connectors** are supplied with self-threading screws.

- Stud Post or Set Screw style
- Santoprene housing
- Accepts up to 400A/600V

## 150A Inline Connectors 8 to 2 AWG



Male  
Part Number  
CLM2M-X

Female  
Part Number  
CLM2f-X

## 150A Panel Mount Connectors 8 to 2 AWG

Stud Post Style

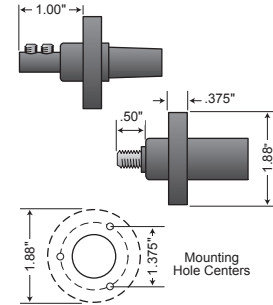
Male  
Part Number  
CLMMRS-X

Female  
Part Number  
CLMFRS-X

Set Screw Style

Male  
Part Number  
CLMMR2-X

Female  
Part Number  
CLMFR2-X



## Protective Covers with Lanyard



Part Number  
CLMMC-X  
Fits male connector

Part Number  
CLMFC-X  
Fits female connector

Available colors:

- Black (A)
- Blue (D)
- Orange (G)
- White (B)
- Green (E)
- Yellow (H)
- Red (C)
- Brown (F)

**TO ORDER**, add desired color code (X) to the part number. Example: CLM2M-B

# 400 Amp to 150 Amp Cam Reducers

**Cam Reducers and Reducer Connectors** step down cable connections from large cam to small cam inline.

## Cam Reducer

Part Number	Amperage Reduction
CLMAD3F-X	400A / 600V Male to 3 150A / 600V Females



Available colors:

- Black (A)
- White (B)
- Red (C)
- Blue (D)
- Green (E)

**TO ORDER**, add desired color code (X) to the part number. Example: CLMAD3F-D

## Reducer Connectors

Part Number	Amperage Reduction
CLMADFF-A	400A Female to 150A Female (available in Black only)
CLMADMF-X	400A Male to 150A Female
CLMADFM-X	400A Female to 150A Male
CLMADMM-X	400A Male to 150A Male



## Custom CLM Cables

Our **Arctic Ultraflex Blue®** single pin connector cables are built to strict quality standards, right here in the USA. Made to order in any quantity. Lifetime warranty. Call to order!





## DC Power Plugs and Receptacles

### 12V High AMP Trolling Motor Plugs, Receptacles, and Covers

ConnectPro® Motor Trolling Plugs and Receptacles feature o-ring seals, weather resistant plug covers and sealing caps for waterproof connections.

- Exclusive marine grade turn-locking connection
- Weather resistant seals and covers safeguard electrical contacts from water and corrosion
- Universal design works with 12, 24, 12/24, 24/36, and 36 Volt 2 or 3 wire systems
- Plating protects brass electrical contacts from power robbing corrosion
- Soft contoured plug cover keeps away dirt and moisture, makes hook-ups and blade alignment easy
- Accepts up to 8 AWG wire
- Receptacle mounts in standard 1-1/8" hole from front or rear, mounting plate included
- Easy install—no crimping, shrink or tape needed

2-Wire Plug  
12VBPS2



12VBPS2 and 12VBRSS2  
also sold as a set  
Set Part Number 12VCPS2



2-Wire  
Receptacle  
12VBRSS2



Cover 300251  
for two or three wires



Cover 300297  
for single wire up  
to 1/2" diameter

3-Wire Plug  
12VBP



3-Wire  
Receptacle  
12VBR

12VBP and 12VBR  
also sold as a set  
Set Part Number 12VCP

### 12V Marine Grade Plug and Receptacle

- Corrosion resistant marine grade construction
- Receptacle mounting plate included
- Watertight receptacle cap
- Plug features LED power indicator
- Easy to install

Plug  
12VPG



12VPG and 12VRC  
also sold as a set  
Set Part Number 12VPK



Receptacle  
12VRC

## AC Power Inlets and Covers

### 125V Power Inlets

- Durable corrosion and UV resistant construction
- Easy to install
- Increases security
- Water-tight cap
- Great for 5th wheels, trailers, and campers
- UL Listed and CSA Certified



**15 AMP**  
150BBI.RV  
Uses standard  
household style  
3-prong plug



**20 AMP**  
200BBI.RV  
Use with 20A  
straight blade  
extension cord

### Weatherproof Covers



Part Number  
6017  
for 15A and 20A Straight  
Blade and 15A Locking Plugs



Part Number  
6018YIRV  
for 15A and 20A female  
receptacles



Part Number  
7715CRV  
for 50 AMP  
female connectors



Part Number  
103ELRV  
for 20A and 30A  
female connectors

# AC Plugs and Connectors

Illuminated, standard, and corrosion resistant **3-wire Plugs and Connectors** in 15, 20, and 30 AMPS. Straight blade and locking styles.

## Features

- Tough ribbed nylon housing resists corrosion and a wide range of chemicals
- 15A and 20A accept #18 to #10 gauge wires
- Solid brass blades, contacts, terminal screws
- Single piece, rivetless contact design means less chance for resistance and heat rise
- Open terminals, close-in wire entrance holes and generous wiring space for easy wiring
- Internal cord clamp insert allows use of greatest range of cord sizes
- Designed with the installer in mind to minimize labor and ensure ease of assembly

## ConnectGlow Devices

- Bright neon bulb with full 360° visibility lights up when a circuit is energized
- Mag-Vu™ window magnifies bulb and terminal for easy inspection
- 5 year limited warranty

## Corrosion Resistant Devices

- Marine grade construction
- Exclusive cover provides waterproof seal
- Nickel plated blades and contacts with stainless steel screws for excellent conductivity in corrosive environments
- Independent lab certified corrosion resistant per 240-hour 5% salt spray test in accordance with ASTM B117
- 5 year limited warranty

## Applications



- Power-driven hand tools
- Electrical industrial equipment
- Temporary taps at construction sites
- Staging and entertainment equipment
- Broadcast studio equipment
- Hospital/healthcare equipment
- Fire-protection equipment
- Manufacturing plants
- Shore power cables

**More sizes and styles online!**

## ConnectGlow Illuminated 3-Wire Plugs and Connectors Clear Housing

Connector Part Number	Plug Part Number	AMPS	Poles/Wires	Volts	Blade Style	Nema Configuration
5269L	5266L	15	2P / 3W	125	Straight	5-15R  5-15P
4729L	4720L	15	2P / 3W	125	Locking	L5-15R  L5-15P
205CL	205PL	20	2P / 3W	125	Locking	L5-20R  L5-20P



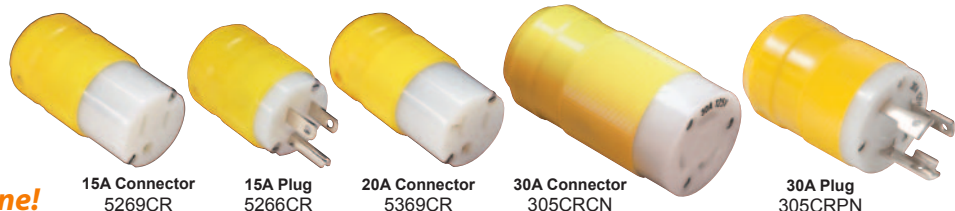
## Standard Non-Lighted 3-wire Plugs and Connectors Black Housing

Connector Part Number	Plug Part Number	AMPS	Poles/Wires	Volts	Blade Style	Nema Configuration
5269N	5266N	15	2P / 3W	125	Straight	5-15R  5-15P
5369N	5366N	20	2P / 3W	125	Straight	5-20R  5-20P
305C	305P	30	2P / 3W	125	Locking	L5-30R  L5-30P



## Corrosion Resistant 3-wire Plugs and Connectors Yellow Housing

Connector Part Number	Plug Part Number	AMPS	Poles/Wires	Volts	Blade Style	Nema Configuration
5269CRV	5266CR	15	2P / 3W	125	Straight	5-15R  5-15P
5369CRV	-	20	2P / 3W	125	Straight	5-20R  5-20P
305CRCN	305CRPN	30	2P / 3W	125	Locking	L5-30R  L5-30P





# Heavy Duty Compression Terminals and Splices

## Heavy Duty Compression Terminals

Made from high strength, highly conductive electrolytic copper, **Heavy Duty Code and Flex Compression Lugs and Splices** are extra tough, durable, reliable, and 100% conductive. They crimp in industry standard tooling for lowest applied cost.

Use in high voltage and heavy duty applications: generators, transformers, switch gear, motor controls, power distribution, welding equipment, telecommunications and utilities.

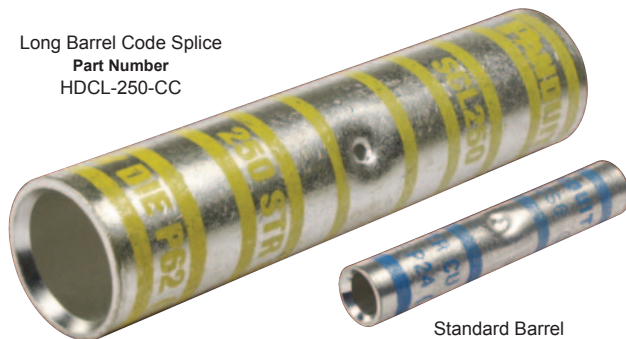
- Easy to read industry standard color code markings indicate size, proper die set, and crimp location
- Heavy duty seamless barrel will not open under stress or conductor pull conditions
- Made from highly conductive wrought copper tubing
- Electro tin plated and burnished to prevent corrosion
- Standard barrel lugs feature inspection hole for verifying strand placement
- Chamfered barrel for easy wire insertion
- Available in standard barrel for limited space applications and long barrel for greater pull out strength and increased conductivity
- UL Listed, CSA Certified and rated to 90°C

Fine strand flexible wire has a slightly larger conductor diameter than code stranded wire. When using **Code Lugs** with 2 AWG and larger **Arctic Ultraflex Blue**® and similar fine strand flexible wire, step up one lug size.

**Flex Lugs, sized for the larger conductor diameter of fine strand flexible wire, are available on pages 100-101**



Long Barrel Code Splice  
Part Number  
HDCL-250-CC



Standard Barrel  
Code Splice  
Part Number HDC-6-CC



## Code Splice Connectors

### Long Barrel Code Splices

Part Number	Die Code	Arctic Ultraflex Wire AWG	Code Stranded Wire AWG
HDCL-8-CC	Red	8	8
HDCL-6-CC	Blue	6	6
HDCL-4-CC	Gray	4	4
HDCL-2-CC	Brown	-	2
HDCL-1-CC	Green	2	1
HDCL-1/0-CC	Pink	1	1/0
HDCL-2/0-CC	Black	1/0	2/0
HDCL-3/0-CC	Orange	2/0	3/0
HDCL-4/0-CC	Purple	3/0	4/0
HDCL-250-CC	Yellow	4/0	250 MCM
HDCL-300-CC	White	250 MCM	300 MCM
HDCL-350-CC	Red	300 MCM	350 MCM
HDCL-400-CC	Blue	350 MCM	400 MCM
HDCL-500-CC	Brown	400 MCM	500 MCM
HDCL-600-CC	Green	500 MCM	600 MCM
HDCL-750-CC	Black	600 MCM	750 MCM
HDCL-900-CC	Yellow	750 MCM	900 MCM
HDCL-1000-CC	White	900 MCM	1000 MCM

### Standard Barrel Code Splices

Part Number	Die Code	Arctic Ultraflex Wire AWG	Code Stranded Wire AWG
HDC-8-CC	Red	8	8
HDC-6-CC	Blue	6	6
HDC-4-CC	Gray	4	4
HDC-2-CC	Brown	-	2
HDC-1-CC	Green	2	1
HDC-1/0-CC	Pink	1	1/0
HDC-2/0-CC	Black	1/0	2/0
HDC-3/0-CC	Orange	2/0	3/0
HDC-4/0-CC	Purple	3/0	4/0
HDC-250-CC	Yellow	4/0	250 MCM
HDC-300-CC	White	250 MCM	300 MCM
HDC-350-CC	Red	300 MCM	350 MCM
HDC-400-CC	Blue	350 MCM	400 MCM
HDC-500-CC	Brown	400 MCM	500 MCM
HDC-600-CC	Green	500 MCM	600 MCM
HDC-700-CC	Pink	600 MCM	700 MCM
HDC-750-CC	Black	700 MCM	750 MCM
HDC-900-CC	Yellow	750 MCM	900 MCM
HDC-1000-CC	White	900 MCM	1000 MCM



# Single Hole Code Lugs

Rated 35KV Applications — Copper Conductors Only

POWER AND INDUSTRIAL CONNECTORS

## Long Barrel Single Hole Code Lugs

Part Number	Stud Size	Die Code	Arctic Ultraflex Wire AWG	Code Stranded Wire AWG
HDCL-810-CC	10	Red	8	8
HDCL-814-CC	1/4	Red	8	8
HDCL-610-CC	10	Blue	6	6
HDCL-614-CC	1/4	Blue	6	6
HDCL-638-CC	3/8	Blue	6	6
HDCL-414-CC	1/4	Gray	4	4
HDCL-4516-CC	5/16	Gray	4	4
HDCL-214-CC	1/4	Brown	-	2
HDCL-2516-CC	5/16	Brown	-	2
HDCL-238-CC	3/8	Brown	-	2
HDCL-114-CC	1/4	Green	2	1
HDCL-1516-CC	5/16	Green	2	1
HDCL-10516-CC	5/16	Pink	1	1/0
HDCL-1038-CC	3/8	Pink	1	1/0
HDCL-2038-CC	3/8	Black	1/0	2/0
HDCL-2012-CC	1/2	Black	1/0	2/0
HDCL-3038-CC	3/8	Orange	2/0	3/0
HDCL-3012-CC	1/2	Orange	2/0	3/0
HDCL-4038-CC	3/8	Purple	3/0	4/0
HDCL-4012-CC	1/2	Purple	3/0	4/0
HDCL-25012-CC	1/2	Yellow	4/0	250 MCM
HDCL-30012-CC	1/2	White	250 MCM	300 MCM
HDCL-35012-CC	1/2	Red	300 MCM	350 MCM
HDCL-40058-CC	5/8	Blue	350 MCM	400 MCM
HDCL-50012-CC	1/2	Brown	400 MCM	500 MCM
HDCL-50058-CC	5/8	Brown	400 MCM	500 MCM
HDCL-60012-CC	1/2	Green	500 MCM	600 MCM
HDCL-60058-CC	5/8	Green	500 MCM	600 MCM
HDCL-75058-CC	5/8	Black	700 MCM	750 MCM
HDCL-100058-CC	5/8	White	750 MCM	1000 MCM

## Standard Barrel Single Hole Code Lugs

with window

Part Number	Stud Size	Die Code	Arctic Ultraflex Wire AWG	Code Stranded Wire AWG
HDC-810-CC	10	Red	8	8
HDC-814-CC	1/4	Red	8	8
HDC-8516-CC	5/16	Red	8	8
HDC-838-CC	3/8	Red	8	8
HDC-610-CC	10	Blue	6	6
HDC-614-CC	1/4	Blue	6	6
HDC-6516-CC	5/16	Blue	6	6
HDC-638-CC	3/8	Blue	6	6
HDC-410-CC	10	Gray	4	4
HDC-414-CC	1/4	Gray	4	4
HDC-4516-CC	5/16	Gray	4	4
HDC-438-CC	3/8	Gray	4	4
HDC-214-CC	1/4	Brown	-	2
HDC-2516-CC	5/16	Brown	-	2
HDC-238-CC	3/8	Brown	-	2
HDC-212-CC	1/2	Brown	-	2
HDC-114-CC	1/4	Green	2	1
HDC-1516-CC	5/16	Green	2	1
HDC-138-CC	3/8	Green	2	1
HDC-1014-CC	1/4	Pink	1	1/0
HDC-10516-CC	5/16	Pink	1	1/0
HDC-1038-CC	3/8	Pink	1	1/0
HDC-1012-CC	1/2	Pink	1	1/0
HDC-2014-CC	1/4	Black	1/0	2/0
HDC-20516-CC	5/16	Black	1/0	2/0
HDC-2038-CC	3/8	Black	1/0	2/0
HDC-2012-CC	1/2	Black	1/0	2/0
HDC-3014-CC	1/4	Orange	2/0	3/0
HDC-30516-CC	5/16	Orange	2/0	3/0
HDC-3038-CC	3/8	Orange	2/0	3/0
HDC-3012-CC	1/2	Orange	2/0	3/0
HDC-4014-CC	1/4	Purple	3/0	4/0
HDC-40516-CC	5/16	Purple	3/0	4/0
HDC-4038-CC	3/8	Purple	3/0	4/0
HDC-4012-CC	1/2	Purple	3/0	4/0
HDC-25014-CC	1/4	Yellow	4/0	250 MCM
HDC-25038-CC	3/8	Yellow	4/0	250 MCM
HDC-25012-CC	1/2	Yellow	4/0	250 MCM
HDC-25058-CC	5/8	Yellow	4/0	250 MCM
HDC-300516-CC	5/16	White	250 MCM	300 MCM
HDC-30038-CC	3/8	White	250 MCM	300 MCM
HDC-30012-CC	1/2	White	250 MCM	300 MCM
HDC-30058-CC	5/8	White	250 MCM	300 MCM
HDC-35038-CC	3/8	Red	300 MCM	350 MCM
HDC-35012-CC	1/2	Red	300 MCM	350 MCM
HDC-35058-CC	5/8	Red	300 MCM	350 MCM
HDC-40038-CC	3/8	Blue	350 MCM	400 MCM
HDC-40012-CC	1/2	Blue	350 MCM	400 MCM
HDC-40058-CC	5/8	Blue	350 MCM	400 MCM
HDC-50038-CC	3/8	Brown	400 MCM	500 MCM
HDC-50012-CC	1/2	Brown	400 MCM	500 MCM
HDC-50058-CC	5/8	Brown	400 MCM	500 MCM
HDC-60012-CC	1/2	Green	500 MCM	600 MCM
HDC-60058-CC	5/8	Green	500 MCM	600 MCM
HDC-70038-CC	5/8	Pink	600 MCM	700 MCM
HDC-75058-CC	5/8	Black	700 MCM	750 MCM
HDC-100058-CC	5/8	White	750 MCM	1000 MCM





# Heavy Duty Compression Terminals and Splices

## Single Hole Flex Lugs

Rated 35KV Applications — Copper Conductors Only

**Heavy Duty Single Hole and Double Hole Flex Compression Lugs** are designed for use with both code stranded and flexible fine stranded copper conductor wire such as Class K **Arctic Ultraflex Blue**®. Flex Lugs can be used with class G, H, I, K, and M flexible conductors and Diesel Locomotive (DLO) wire.

Flex Lugs are sized for the larger conductor diameter of flexible wire. When using flex lugs with either flexible or code stranded conductors, match the lug to the wire size.



**2 AWG  
Flex Lug**

**2 AWG  
Code Lug**

### Long Barrel Single Hole Flex Lugs with window

Part Number	Stud Size	Die Code	Arctic Ultraflex Wire AWG	Code Stranded Wire AWG
HDCLF-814-CC	1/4	Red	8	8
HDCLF-614-CC	1/4	Blue	6	6
HDCLF-638-CC	3/8	Blue	6	6
HDCLF-414-CC	1/4	Gray	4	4
HDCLF-438-CC	3/8	Gray	4	4
HDCLF-214-CC	1/4	Brown	2	2
HDCLF-238-CC	3/8	Brown	2	2
HDCLF-212-CC	1/2	Brown	2	2
HDCLF-2038-CC	3/8	Black	2/0	2/0
HDCLF-2012-CC	1/2	Black	2/0	2/0
HDCLF-4038-CC	3/8	Purple	4/0	4/0
HDCLF-4012-CC	1/2	Purple	4/0	4/0
HDCLF-50038-CC	3/8	Pink	500 MCM/535.3 DLO	500 MCM

### Standard Barrel Single Hole Flex Lugs with window

Part Number	Stud Size	Die Code	Arctic Ultraflex Wire AWG	Code Stranded Wire AWG
HDCF-810-CC	10	Red	8	8
HDCF-814-CC	1/4	Red	8	8
HDCF-838-CC	3/8	Red	8	8
HDCF-610-CC	10	Blue	6	6
HDCF-614-CC	1/4	Blue	6	6
HDCF-6516-CC	5/16	Blue	6	6
HDCF-638-CC	3/8	Blue	6	6
HDCF-410-CC	10	Gray	4	4
HDCF-414-CC	1/4	Gray	4	4
HDCF-4516-CC	5/16	Gray	4	4
HDCF-438-CC	3/8	Gray	4	4
HDCF-214-CC	1/4	Brown	2	2
HDCF-2516-CC	5/16	Brown	2	2
HDCF-238-CC	3/8	Brown	2	2
HDCF-212-CC	1/2	Brown	2	2
HDCF-114-CC	1/4	Green	1	1
HDCF-1516-CC	5/16	Green	1	1
HDCF-138-CC	3/8	Green	1	1
HDCF-1014-CC	1/4	Pink	1/0	1/0
HDCF-10516-CC	5/16	Pink	1/0	1/0
HDCF-1038-CC	3/8	Pink	1/0	1/0
HDCF-1012-CC	1/2	Pink	1/0	1/0
HDCF-2014-CC	1/4	Black	2/0	2/0
HDCF-20516-CC	5/16	Black	2/0	2/0
HDCF-2038-CC	3/8	Black	2/0	2/0
HDCF-2012-CC	1/2	Black	2/0	2/0
HDCF-3014-CC	1/4	Orange	3/0	3/0
HDCF-30516-CC	5/16	Orange	3/0	3/0
HDCF-3038-CC	3/8	Orange	3/0	3/0
HDCF-3012-CC	1/2	Orange	3/0	3/0
HDCF-4014-CC	1/4	Purple	4/0	4/0
HDCF-40516-CC	5/16	Purple	4/0	4/0
HDCF-4038-CC	3/8	Purple	4/0	4/0
HDCF-4012-CC	1/2	Purple	4/0	4/0
HDCF-25014-CC	1/4	Yellow	250 MCM/262.6 DLO	250 MCM
HDCF-25038-CC	3/8	Yellow	250 MCM/262.6 DLO	250 MCM
HDCF-25012-CC	1/2	Yellow	250 MCM/262.6 DLO	250 MCM
HDCF-30038-CC	3/8	White	300 MCM/313.1 DLO	300 MCM
HDCF-30012-CC	1/2	White	300 MCM/313.1 DLO	300 MCM
HDCF-30058-CC	5/8	White	300 MCM/313.1 DLO	300 MCM
HDCF-35038-CC	3/8	Red	350 MCM/373.7 DLO	350 MCM
HDCF-35012-CC	1/2	Red	350 MCM/373.7 DLO	350 MCM
HDCF-35058-CC	5/8	Red	350 MCM/373.7 DLO	350 MCM
HDCF-500516-CC	5/16	Brown	500 MCM/535.3 DLO	500 MCM
HDCF-50038-CC	3/8	Brown	500 MCM/535.3 DLO	500 MCM
HDCF-50012-CC	1/2	Brown	500 MCM/535.3 DLO	500 MCM
HDCF-50058-CC	5/8	Brown	500 MCM/535.3 DLO	500 MCM



Single Hole  
Long Barrel Flex Lug  
Part Number  
HDCLF-50038-CC



Single Hole  
Standard Barrel  
Flex Lug  
Part Number  
HDCF-4516-CC



# Two Hole Flex Lugs

Rated 35KV Applications — Copper Conductors Only

- Two-hole tongue style increases contact area and prevents connector rotation

## Long Barrel Two Hole Flex Lugs

with window

Part Number	Stud Size	Hole Center (Inches)	Die Code	Arctic Ultraflex Wire AWG	Code Stranded Wire AWG
HDCLF-8102-CC	10	5/8	● Red	8	8
HDCLF-8142-CC	1/4	5/8	● Red	8	8
HDCLF-8142-TC	1/4	3/4	● Red	8	8
HDCLF-8382-TC	3/8	1	● Red	8	8
HDCLF-6102-CC	10	5/8	● Blue	6	6
HDCLF-6142-TC	1/4	5/8	● Blue	6	6
HDCLF-6142-CC	1/4	3/4	● Blue	6	6
HDCLF-6142-TC2	1/4	1	● Blue	6	6
HDCLF-6382-TC	3/8	1	● Blue	6	6
HDCLF-4142-TC	1/4	5/8	● Gray	4	4
HDCLF-4142-CC	1/4	3/4	● Gray	4	4
HDCLF-4382-CC	3/8	1	● Gray	4	4
HDCLF-2142-TC	1/4	5/8	● Brown	2	2
HDCLF-2142-CC	1/4	3/4	● Brown	2	2
HDCLF-2382-TC	3/8	1	● Brown	2	2
HDCLF-1142-CC	1/4	5/8	● Green	1	1
HDCLF-1142-TC	1/4	3/4	● Green	1	1
HDCLF-1382-CC	3/8	1	● Green	1	1
HDCLF-10142-CC	1/4	5/8	● Pink	1/0	1/0
HDCLF-10382-TC	3/8	1	● Pink	1/0	1/0
HDCLF-20142-CC	1/4	5/8	● Black	2/0	2/0
HDCLF-20142-TC	1/4	3/4	● Black	2/0	2/0
HDCLF-20382-TC	3/8	1	● Black	2/0	2/0
HDCLF-20122-TC	1/2	1-3/4	● Black	2/0	2/0
HDCLF-30382-TC	3/8	1	● Orange	2/0	3/0
HDCLF-40142-TC	1/4	3/4	● Purple	4/0	4/0
HDCLF-40382-CC	3/8	1	● Purple	4/0	4/0
HDCLF-40122-TC	1/2	1-3/4	● Purple	4/0	4/0
HDCLF-250382-TC	3/8	1	● Yellow	250 MCM/262.6 DLO	250 MCM
HDCLF-250122-TC	1/2	1-3/4	● Yellow	250 MCM/262.6 DLO	250 MCM
HDCLF-300382-TC	3/8	1	● Red	300 MCM/313.1 DLO	300 MCM
HDCLF-500382-TC	3/8	1	● Pink	500 MCM/535.3 DLO	500 MCM



Two Hole Long Barrel Flex Lug  
Part Number  
HDCLF-40382-CC

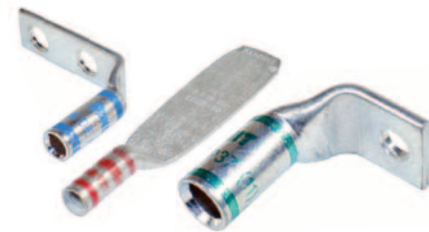


Two Hole Standard Barrel Flex Lug  
Part Number  
HDCF-2142-CC

## Standard Barrel Two Hole Flex Lugs

with window

Part Number	Stud Size	Hole Center (Inches)	Die Code	Arctic Ultraflex Wire AWG	Code Stranded Wire AWG
HDCF-8102-CC	10	5/8	● Red	8	8
HDCF-8142-CC	1/4	5/8	● Red	8	8
HDCF-8142-TC	1/4	3/4	● Red	8	8
HDCF-8142-TC2	1/4	1	● Red	8	8
HDCF-6142-CC	1/4	5/8	● Blue	6	6
HDCF-6142-TC	1/4	3/4	● Blue	6	6
HDCF-65162-CC	5/16	1	● Blue	6	6
HDCF-6382-CC	3/8	1	● Blue	6	6
HDCF-4142-CC	1/4	5/8	● Gray	4	4
HDCF-4142-TC	1/4	3/4	● Gray	4	4
HDCF-4142-TC2	1/4	1	● Gray	4	4
HDCF-2142-TC2	1/4	1	● Brown	2	2
HDCF-1142-TC	1/4	1	● Green	1	1
HDCF-40382-TC	3/8	1	● Purple	4/0	4/0
HDCF-250382-CC	3/8	1	● Yellow	250 MCM	250 MCM
HDCF-350382-CC	3/8	1	● Red	350 MCM	350 MCM



**Call for additional configurations and non-standard stud sizes**

Minimums may apply, lead times may vary