

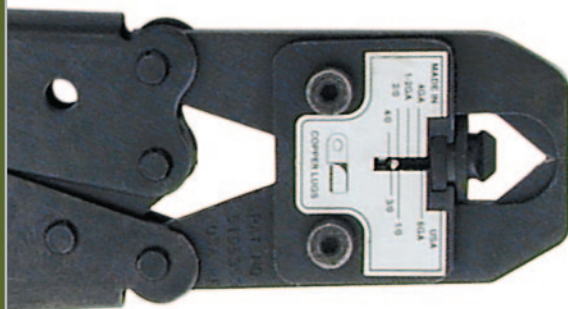
Large Wire Gauge Handheld, Bench, and Hammer Crimpers

TOOLS

IlSCO® Tri-Form Compression Crimper

The **Tri-Form Compression Crimper** distributes equal force on all three sides of its unique dieless triangular crimp, eliminating pinching and fracturing and producing a homogenous mass of copper. Crimps battery terminals, connectors and heavy-duty lugs from 6 AWG through 4/0 AWG.

- Over 50 settings—two finger dial adjusts settings quickly and accurately
- Bench tool version has angle iron mounting brackets, good visibility of crimp location, and provides added leverage



Handheld
Part Number
CT-804
Length 25"
Weight 5 lbs

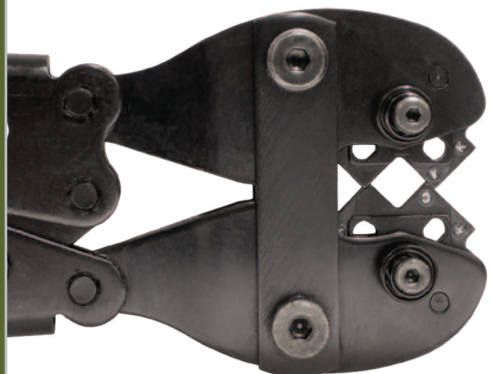


Bench Mount
Part Number
BT-904
Length 23"
Weight 6.2 lbs

IlSCO® Correct Crimp Compound Crimper

Correct Crimp exerts 5 tons of force for fast, complete crimps. Its built-in diamond shaped rotating dies quickly adjust to accommodate various terminals and lugs. Produces a solid mass of copper every time, assuring a low-resistance connection. Single screw adjustment provides for easy calibration to compensate for die wear. Crimps battery terminals, lugs and connectors. 6 AWG to 250 MCM range.

Handheld 94285 includes a controlled cycle ratchet mechanism—once a crimp is started, the tool will not release until the crimp cycle is complete. Quick override lever for safety.



Handheld
Part Number 94284
Length 25"
Weight 5.9 lbs

Controlled Cycle
Handheld (not pictured)
Part Number 94285
Length 25"
Weight 6.2 lbs

Same as 94284 with controlled mechanism to assure full closure of tool



Bench Mount
Part Number
94284-BM
Length 20"
Weight 7.8 lbs

IlSCO® Heavy Duty Crimper

Heavy Duty Crimper features a dieless single indent compressor; there are no separate dies to buy or lose.

- Broad wire range—crimps 8 AWG to 4/0 AWG aluminum, and 8 AWG to 250 MCM copper
- Steel adjusting knob provides fast and easy setting—simply align the wire size gauge to the die nest
- IlSCO's standard line of connectors are UL Listed when crimped with this tool



Part Number MT-25

Eclipse® Economy Heavy Duty Crimper

Economy Heavy Duty Crimper terminates insulated and non-insulated cable lugs from 8 AWG to 250 MCM copper and 8 AWG to 4/0 aluminum with dual capacity plates.

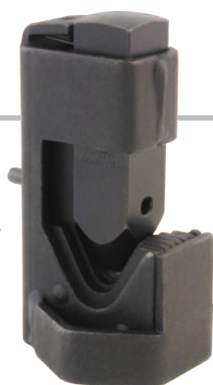
- Easy-to-use adjustment knob on top of tool
- Non-ratcheted



Part Number 300-107

Heavy Duty Hammer Crimp Tool

Part Number
94840

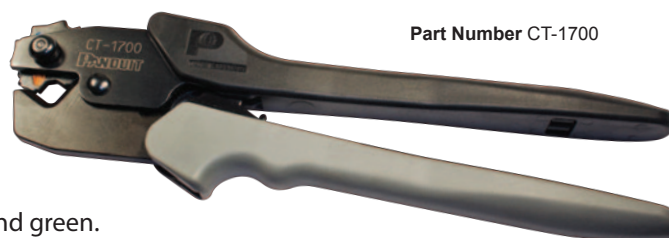


This **Heavy Duty Hammer Crimp** is a compact and durable tool for crimping lugs and terminals from 6 AWG to 4/0. Made of high strength steel, the hammer crimp tool features a V-shaped nest for a solid crimp each time with the simple swing of a hammer. A terminal and lug size guide lets you know the crimp is complete.

- Crimps with a hammer
- Small, portable, easy to use

Panduit® Contour Crimp

The **Contour Crimp** controlled cycle ratchet crimping tool crimps 8 to 1 AWG copper lugs and splices, 6 to 4 AWG aluminum lugs and splices, and 8 to 2 AWG non-insulated S Series tubular terminals. The rotary die-wheel locks easily into position with a push-button mechanism. Each die is embossed with die-code color. Nest includes red, blue, gray, brown, and green.



Part Number CT-1700

Small Wire Gauge Handheld Crimpers, Crimp Frames and Dies

TOOLS

Molex® ServiceGrade™ Ratchet Hand Crimper

Ratchet Hand Crimper crimps heat shrink terminals 22 to 10 AWG (rings, /s, hooks, 3 and 4 ways, and splices).

- Full cycling ensures complete crimps
- Small handle spread is ideal for all users
- Crimp release for operator safety

Part Number
RHT-5770



IlSCO® Compound Action Crimper

Compound Action Controlled Crimper is specifically designed for heat shrink style terminals. Elliptical nest for crimping insulated terminals.

- Wire range 22 to 10 AWG
- Weight: 12.4 oz. Length: 9 1/8"



Part Number
94130

Pro'sKit® Crimp Frames and Die Sets

Pro'sKit® **Crimping Tools** use interchangeable die sets to crimp a wide variety of connectors for electrical and industrial wire, twisted pair and flat phone cable, fiber optic cable, coaxial cable, etc. All metal parts are oil-hardened tempered steel. Precision dies and integral ratcheting mechanism ensure high crimp quality.

- Choose frames and die sets individually for maximum versatility and cost efficiency
- Dies are changed easily with thumbscrews
- Crimping pressure adjustment wheel
- Ratcheting action for perfect crimps
- Lever action, ergonomic, non-slip handles



**CrimPro
Crimp Frame**
Die set sold
separately
Part Number
902-085



**Ergo-Lunar
Crimp Frame**
Part Number
300-096

**Lunar
Crimp Frame**
Part Number
300-054

**Crimp Frames
and Die Sets
sold individually**

Interchangeable Die Sets

Die	Profile	Part Number	Application	Crimp Size
		300-039	Open Barrel Contacts	AWG 22-18/16-14/12-10 DIN 0.5-1.0/1.5-2.5/4.0-6.0mm ²
		300-058	Red, Yellow, Blue Nylon and Vinyl Insulated Terminals	AWG 22-18/16-14/12-10 DIN 0.5-1.0/1.5-2.5/4.0-6.0mm ²
		300-070	Insulated Flag Terminals	AWG 22-18/16-14 DIN 0.5-1.0/1.5-2.5mm ²
		300-071	Uninsulated Flag Terminals	AWG 22-18/16-14 DIN 0.5-1.0/1.5-2.5mm ²
		300-077D	Insulated and Non-Insulated Wire Ferrules	AWG 6/4/2 DIN 16/25/35mm ²
		300-095	Uninsulated Terminals	AWG 20-18/16-14/12-10/8 DIN 0.5-1.0/1.5-2.5/4.0-6.0mm ²
		300-097	Insulated and Non-Insulated Wire Ferrules	AWG 22/20/18/16/14/12 DIN 0.5/0.75/1.0/1.5/2.5/4.0mm ²
		300-101	Red, Yellow, Blue Nylon/Vinyl Thinstyle Insulated Terminals	AWG 22-18/16-14/12-10 DIN 0.5-1.0/1.5-2.5/4.0-6.0/10.0mm ²
		300-103	Insulated and Non-Insulated Wire Ferrules	AWG 10/8/6 DIN 6/10/16mm ²
		300-104	Nylon and Vinyl Miniature Insulated Terminals	AWG 26-16 DIN 0.2-1.5mm ²
		9PK-3003D27	Insulated Terminals	AWG 22-18/16-14/12-10/8 DIN 0.5-1.0/1.5-2.5/4.0-6.0mm ² / 10.0mm ²
		9PK-3003D42	Yellow and Blue Insulated Flag Terminals	AWG 16-14/12-10 DIN 1.5-2.5/4.0-6.0mm ²
		CP-5S2D	Multi-Contact (MC4) 04mm Solar Contacts	AWG 14/12/10 DIN 2.5/4.0/6.0mm ²



EK50ML Micro Crimping Tool

The new EK50ML battery powered **Micro Crimping Tool** combines the benefits of manual crimping tools with the convenience of battery-powered hydraulic tools. This lightweight tool can deliver 3,400 pounds of crimping force and crimps 65 percent faster with 90 percent less hand force compared to ratcheting tools, making it the ideal crimper for high volume, time critical jobs.

The EK50ML is designed to crimp 28 – 4 AWG wire using PowerSense™ Technology, a patented trigger which allows you to hold your work in the jaws of the tool before crimping. Powered by a compact 10.8V Lithium-Ion battery, the EK50ML Micro Crimping Tool can perform 250 crimps to 10 AWG wire on a single battery charge.

Intelligent Crimping System Technology monitors amp draw for each crimp and provides a visual alert if a crimp does not complete a full cycle.

Features

- Includes 2 die sets to crimp 22-10 AWG heat shrink terminals and nylon insulated terminals; other die sets sold separately
- Patented jaw actuation for crimping cycle
- Crimps three times faster and with 90% less force
- Reduces hand force from 53 pounds to 6 pounds
- 1.2 seconds to perform crimp using one finger
- 65% faster crimping than ratcheting tools (1.2 seconds vs 3.5 seconds)
- Innovative PowerSense™ trigger holds work to be crimped
- When crimping is complete, simply release the trigger to open the jaws for the next crimp
- Overmolded tacky grip for maximum comfort and security
- Multifunction LED for maintenance display and data transfer via optional interface and USB adapter
- LED work light for use in dark areas
- LED battery level indicator monitors charge
- 10.8V Li-ion battery can perform up to 250 crimps to 10 AWG wire on one battery charge
- Weighs just 2.2 lbs with battery
- 12mm Jaw

*Many more dies available soon.
Contact us!*



Part Number
EK50ML

**Includes micro crimper,
10.8V Li-ion battery,
110V battery charger,
two die sets,
and case**



Crimps 22-10 AWG
heat shrink terminals



Crimps 22-10 AWG nylon
insulated terminals