

Hydraulic Compression Tools and Dies

Panduit® Manual Dieless Hydraulic Compression Tool

Features

- Crimps copper compression lugs and splices from 4 AWG up to 750 kcmil
- Dieless operation — no separate dies to buy or lose
- Develops 6.2 tons of crimping force with four point indenter system
- Two-stage rapid advance hydraulic system minimizes number of pumps required to complete a crimp
- Crimp head rotates 360 degrees for use in restricted spaces
- Aluminum crimp head and fiberglass handles reduce weight



Part Number CT-980

- Flip-top crimp head design allows easy loading of connectors, saves time
- Audible “pop-off” valve indicates crimp completion

Manual Hydraulic Crimping Tool

Self-Contained Hydraulic Crimping Tool installs copper and aluminum connectors and lugs, and 2-way connectors. Features rapid-ram advance mechanism for fast installation, and short fiberglass handles for confined work spaces. Achieves 14 tons of compression force, and uses standard shell dies (sold separately below). Tool comes with carrying case.

Features

- Two stage pump for rapid advance
- Compatible with all 15500 Series die sets
- Installs lugs and connectors through 750 MCM
- Installs grid connectors through 500 MCM and 5/8" rod
- Uses standard T&B color color-keyed dies shown below
- Weighs 15.4 lbs (less case), 24.4" in length

Installation Range

Lugs and Splices

Copper	8 AWG to 750 MCM
Aluminum	10 AWG to 750 MCM



Part Number EP510

Hydraulic Head Dies

Crimping Dies and Connectors are color coded for easy matching.

- Embosses die index number on connector barrels for post crimp inspection.
- Part number permanently marked on crimping die for easy identification.
- Provides circumferential crimp results in terminations with premium electrical and mechanical performance.



Head Dies

Polar Wire	Ilco	T&B	Burndy	Panduit	Wire Range	Color Code
DIE-8	ILD-1	15520	U8CRT	CD-920-8	8 AWG	Red
DIE-6	ILD-2	15522	U5CRT	CD-920-6	6 AWG	Blue
DIE-4	ILD-3	15527	U4CRT	CD-920-4	4 AWG	Gray
DIE-2	ILD-4	15528	U2CRT	CD-920-2	2 AWG	Brown
DIE-1	ILD-4	15513	U1CRT	CD-920-1	1 AWG	Green
DIE-1/0	ILD-5	15508	U25RT	CD-920-1/0	1/0 AWG	Pink
DIE-2/0	ILD-6	15526	U26RT	CD-920-2/0	2/0 AWG	Black
DIE-3/0	ILD-9	15530	U27RT	CD-920-3/0	3/0 AWG	Orange
DIE-4/0	ILD-10	15511	U28RT	CD-920-4/0	4/0 AWG	Purple
DIE-250	ILD-11	15510	U29RT	CD-920-250	250 MCM	Yellow
DIE-300	ILD-12	15534	U30RT	CD-920-300	300 MCM	White
DIE-350	ILD-13	15514	U31RT	CD-920-350	350 MCM	Red
DIE-400	ILD-14	15512	U32RT	CD-920-400	400 MCM	Blue
DIE-500	ILD-15	15506	U34RT	CD-920-500	500 MCM	Brown
DIE-600	ILD-16	15536	U36RT	CD-920-600	600 MCM	Green
DIE-750	ILD-17	15515	U39RT	CD-920-750	750 MCM	Black

Panduit® 6.2 Ton Lithium-Ion Dieless Hydraulic Crimper

Uni-Die Dieless Hydraulic Crimping Tool develops 6.2 tons of force to crimp 4 AWG to 750 kcmil copper compression lugs and splices, and crimps 25% faster than most comparable tools. Includes two batteries, charger, shoulder strap, and tool bag.

Features

- Up to 135% more crimps per charge than tools with NiCd or NiMH batteries (up to 183 crimps with a Panduit 500 kcmil lug)
- Provides UL Listed and CSA Certified wire range-taking capability with Panduit copper lugs and splices
- ~3.5 second crimp cycle time
- Ergonomically balanced and lightweight, only 11.75 lbs. with battery
- Aluminum alloy flip-top crimp head rotates 360°
- Audible “pop-off” valve indicates crimp completion
- 120 VAC (230 VAC model also available)



Part Number
CT-2980L

Panduit® 6.7 Ton Lithium-Ion Dieless Inline Hydraulic Crimper

The Panduit® BlackFin® **Lithium-ion Dieless In-line Hydraulic Crimp Tool** makes terminations quick and easy thanks to a low-profile 350-degree rotating flip-top crimp head, and a variable crimp force of 3.4 - 6.7 tons (30-60 kN).

Features

- Crimps 8 AWG – 600 kcmil Code and 8 AWG – 373 kcmil flex copper lugs and splices, and 6 AWG – 350 kcmil aluminum lugs and splices
- 2-stage hydraulic system features telescoping indenter, rapid advance and power stroke, 2-7 second crimp cycle, and automatic retraction on completion
- Manual retraction stop with “teach in” feature to set position of piston stop
- Integrated pressure measurements system monitors crimping pressure 32x/second for correct crimp force, and provides visual and audible signals if full crimp force is not attained
- Quick motor stop for high user safety
- Tool function readout via infrared sensor and optional CT-USB adapter
- LED worklight for workpiece illumination
- Ergonomic, low profile, in-line design with soft rubber inlay comfort grips, one button operation
- 300 crimps on a 300 kcmil (150mm²) copper code lug per battery charge
- Includes two 18 vdc Li-ion, 3 Amp-hr batteries with fast 22 minute recharge time, charger, and plastic carrying case



Part Number
CT-3980

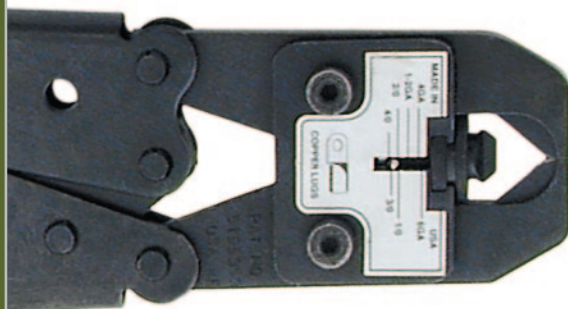
Large Wire Gauge Handheld, Bench, and Hammer Crimpers

TOOLS

IlSCO® Tri-Form Compression Crimper

The **Tri-Form Compression Crimper** distributes equal force on all three sides of its unique dieless triangular crimp, eliminating pinching and fracturing and producing a homogenous mass of copper. Crimps battery terminals, connectors and heavy-duty lugs from 6 AWG through 4/0 AWG.

- Over 50 settings—two finger dial adjusts settings quickly and accurately
- Bench tool version has angle iron mounting brackets, good visibility of crimp location, and provides added leverage



Handheld
Part Number
CT-804
Length 25"
Weight 5 lbs

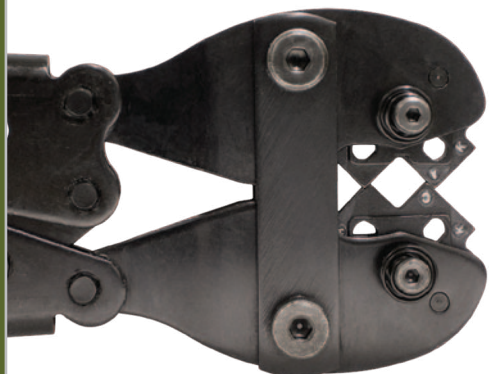


Bench Mount
Part Number
BT-904
Length 23"
Weight 6.2 lbs

IlSCO® Correct Crimp Compound Crimper

Correct Crimp exerts 5 tons of force for fast, complete crimps. Its built-in diamond shaped rotating dies quickly adjust to accommodate various terminals and lugs. Produces a solid mass of copper every time, assuring a low-resistance connection. Single screw adjustment provides for easy calibration to compensate for die wear. Crimps battery terminals, lugs and connectors. 6 AWG to 250 MCM range.

Handheld 94285 includes a controlled cycle ratchet mechanism—once a crimp is started, the tool will not release until the crimp cycle is complete. Quick override lever for safety.



Handheld
Part Number 94284
Length 25"
Weight 5.9 lbs

Controlled Cycle
Handheld (not pictured)
Part Number 94285
Length 25"
Weight 6.2 lbs

Same as 94284 with controlled mechanism to assure full closure of tool



Bench Mount
Part Number
94284-BM
Length 20"
Weight 7.8 lbs

IlSCO® Heavy Duty Crimper

Heavy Duty Crimper features a dieless single indent compressor; there are no separate dies to buy or lose.

- Broad wire range—crimps 8 AWG to 4/0 AWG aluminum, and 8 AWG to 250 MCM copper
- Steel adjusting knob provides fast and easy setting—simply align the wire size gauge to the die nest
- IlSCO's standard line of connectors are UL Listed when crimped with this tool



Part Number MT-25

Eclipse® Economy Heavy Duty Crimper

Economy Heavy Duty Crimper terminates insulated and non-insulated cable lugs from 8 AWG to 250 MCM copper and 8 AWG to 4/0 aluminum with dual capacity plates.

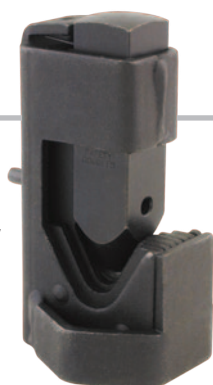
- Easy-to-use adjustment knob on top of tool
- Non-ratcheted



Part Number 300-107

Heavy Duty Hammer Crimp Tool

Part Number
94840

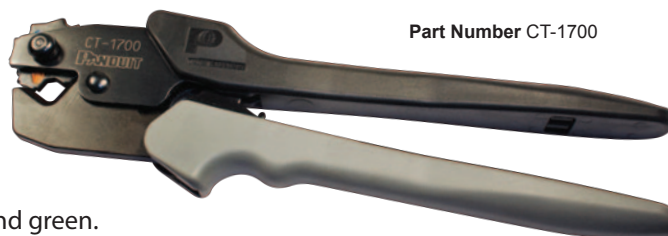


This **Heavy Duty Hammer Crimp** is a compact and durable tool for crimping lugs and terminals from 6 AWG to 4/0. Made of high strength steel, the hammer crimp tool features a V-shaped nest for a solid crimp each time with the simple swing of a hammer. A terminal and lug size guide lets you know the crimp is complete.

- Crimps with a hammer
- Small, portable, easy to use

Panduit® Contour Crimp

The **Contour Crimp** controlled cycle ratchet crimping tool crimps 8 to 1 AWG copper lugs and splices, 6 to 4 AWG aluminum lugs and splices, and 8 to 2 AWG non-insulated S Series tubular terminals. The rotary die-wheel locks easily into position with a push-button mechanism. Each die is embossed with die-code color. Nest includes red, blue, gray, brown, and green.



Part Number CT-1700

Small Wire Gauge Handheld Crimpers, Crimp Frames and Dies

TOOLS

Molex® ServiceGrade™ Ratchet Hand Crimper

Ratchet Hand Crimper crimps heat shrink terminals 22 to 10 AWG (rings, /s, hooks, 3 and 4 ways, and splices).

- Full cycling ensures complete crimps
- Small handle spread is ideal for all users
- Crimp release for operator safety

Part Number
RHT-5770



IlSCO® Compound Action Crimper

Compound Action Controlled Crimper is specifically designed for heat shrink style terminals. Elliptical nest for crimping insulated terminals.

- Wire range 22 to 10 AWG
- Weight: 12.4 oz. Length: 9 1/8"



Part Number
94130

Pro'sKit® Crimp Frames and Die Sets

Pro'sKit® **Crimping Tools** use interchangeable die sets to crimp a wide variety of connectors for electrical and industrial wire, twisted pair and flat phone cable, fiber optic cable, coaxial cable, etc. All metal parts are oil-hardened tempered steel. Precision dies and integral ratcheting mechanism ensure high crimp quality.

- Choose frames and die sets individually for maximum versatility and cost efficiency
- Dies are changed easily with thumbscrews
- Crimping pressure adjustment wheel
- Ratcheting action for perfect crimps
- Lever action, ergonomic, non-slip handles



**CrimPro
Crimp Frame**
Die set sold
separately
Part Number
902-085



**Ergo-Lunar
Crimp Frame**
Part Number
300-096

**Lunar
Crimp Frame**
Part Number
300-054

**Crimp Frames
and Die Sets
sold individually**

Interchangeable Die Sets

Die	Profile	Part Number	Application	Crimp Size
		300-039	Open Barrel Contacts	AWG 22-18/16-14/12-10 DIN 0.5-1.0/1.5-2.5/4.0-6.0mm ²
		300-058	Red, Yellow, Blue Nylon and Vinyl Insulated Terminals	AWG 22-18/16-14/12-10 DIN 0.5-1.0/1.5-2.5/4.0-6.0mm ²
		300-070	Insulated Flag Terminals	AWG 22-18/16-14 DIN 0.5-1.0/1.5-2.5mm ²
		300-071	Uninsulated Flag Terminals	AWG 22-18/16-14 DIN 0.5-1.0/1.5-2.5mm ²
		300-077D	Insulated and Non-Insulated Wire Ferrules	AWG 6/4/2 DIN 16/25/35mm ²
		300-095	Uninsulated Terminals	AWG 20-18/16-14/12-10/8 DIN 0.5-1.0/1.5-2.5/4.0-6.0mm ²
		300-097	Insulated and Non-Insulated Wire Ferrules	AWG 22/20/18/16/14/12 DIN 0.5/0.75/1.0/1.5/2.5/4.0mm ²
		300-101	Red, Yellow, Blue Nylon/Vinyl Thinstyle Insulated Terminals	AWG 22-18/16-14/12-10 DIN 0.5-1.0/1.5-2.5/4.0-6.0/10.0mm ²
		300-103	Insulated and Non-Insulated Wire Ferrules	AWG 10/8/6 DIN 6/10/16mm ²
		300-104	Nylon and Vinyl Miniature Insulated Terminals	AWG 26-16 DIN 0.2-1.5mm ²
		9PK-3003D27	Insulated Terminals	AWG 22-18/16-14/12-10/8 DIN 0.5-1.0/1.5-2.5/4.0-6.0mm ² / 10.0mm ²
		9PK-3003D42	Yellow and Blue Insulated Flag Terminals	AWG 16-14/12-10 DIN 1.5-2.5/4.0-6.0mm ²
		CP-5S2D	Multi-Contact (MC4) 04mm Solar Contacts	AWG 14/12/10 DIN 2.5/4.0/6.0mm ²



EK50ML Micro Crimping Tool

The new EK50ML battery powered **Micro Crimping Tool** combines the benefits of manual crimping tools with the convenience of battery-powered hydraulic tools. This lightweight tool can deliver 3,400 pounds of crimping force and crimps 65 percent faster with 90 percent less hand force compared to ratcheting tools, making it the ideal crimper for high volume, time critical jobs.

The EK50ML is designed to crimp 28 – 4 AWG wire using PowerSense™ Technology, a patented trigger which allows you to hold your work in the jaws of the tool before crimping. Powered by a compact 10.8V Lithium-Ion battery, the EK50ML Micro Crimping Tool can perform 250 crimps to 10 AWG wire on a single battery charge.

Intelligent Crimping System Technology monitors amp draw for each crimp and provides a visual alert if a crimp does not complete a full cycle.

Features

- Includes 2 die sets to crimp 22-10 AWG heat shrink terminals and nylon insulated terminals; other die sets sold separately
- Patented jaw actuation for crimping cycle
- Crimps three times faster and with 90% less force
- Reduces hand force from 53 pounds to 6 pounds
- 1.2 seconds to perform crimp using one finger
- 65% faster crimping than ratcheting tools (1.2 seconds vs 3.5 seconds)
- Innovative PowerSense™ trigger holds work to be crimped
- When crimping is complete, simply release the trigger to open the jaws for the next crimp
- Overmolded tacky grip for maximum comfort and security
- Multifunction LED for maintenance display and data transfer via optional interface and USB adapter
- LED work light for use in dark areas
- LED battery level indicator monitors charge
- 10.8V Li-ion battery can perform up to 250 crimps to 10 AWG wire on one battery charge
- Weighs just 2.2 lbs with battery
- 12mm Jaw

*Many more dies available soon.
Contact us!*



Part Number
EK50ML

**Includes micro crimper,
10.8V Li-ion battery,
110V battery charger,
two die sets,
and case**



Crimps 22-10 AWG
heat shrink terminals



Crimps 22-10 AWG nylon
insulated terminals

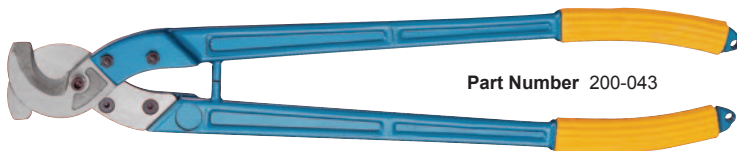
Cutting, Stripping, Slitting Tools

TOOLS

Eclipse® Economy Heavy Duty Cable Cutter

Heavy Duty Cable Cutter handles aluminum and soft copper cables up to 500 MCM.

- Rubberized cushioning in handles
- Heavy duty construction
- Jaw and handle designed for easy cutting



Part Number 200-043

IlSCO® Heavy Duty Cable Cutter

Heavy Duty Cable Cutter cuts up to 500 MCM copper or aluminum cable.

- Sharp, precision-ground Moly steel blades make clean, distortion-free cuts and stay sharper longer
- Durable 20 3/4" fiberglass handles



Part Number CTR-500

IlSCO® Manual Cutter

Manual Cutter cuts up to 2/0 AWG copper or aluminum cable—a great cutting range for a pouch tool.

- 7 1/2" overall length gives better leverage for easier cutting
- Sharp, precision-ground blades make clean, distortion-free cuts
- Blades are heat treated for long, dependable and durable operation
- Narrow head design for easier access to confined areas

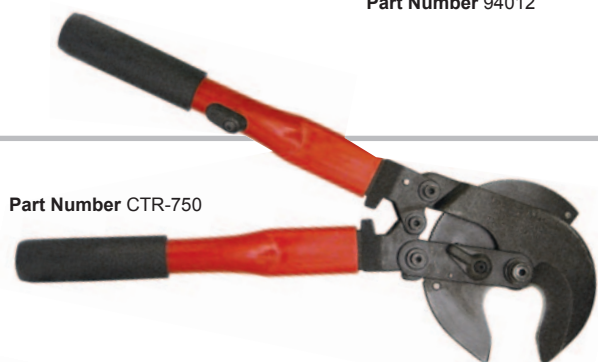


Part Number 94012

IlSCO® Ratchet Cable Cutter

Lightweight **Cable Cutter** with ratchet mechanism and open/close lever cuts up to 750 MCM copper or aluminum cable. 16" length.

- Alloy steel precision-ground replaceable blades



Part Number CTR-750

Eclipse® Economy Heavy Duty Ratchet Cutter

Heavy Duty Cable Cutter cuts aluminum and soft copper cables up to 1 1/4" or 500 MCM.

- Ratcheted with safety release
- Comfortable handles



Part Number 200-006

Eclipse® Forged Cable Cutters

Eclipse® high-leverage forged steel **Cable Cutters** cut solid and stranded copper and aluminum wire and cable. Sheer cut blades are shaped to keep cable round during cutting.

- Comfortable, non-slip PVC handles
- HRC 45°±3°, Cutting edge: HRC 60°±5°
- ISO 9001 Certified

200-069

- Cuts copper cable up to 16mm² solid, 35mm² stranded, and 70mm² flexible; aluminum up to 70mm² stranded
- 10" length

200-068

- Cuts copper cable up to 25mm² flexible; aluminum cable up to 25mm² stranded
- 6 1/2" length



Eclipse® Precision Wire Stripper

Eclipse® Precision Wire Stripper strips and cuts 10 AWG to 20 AWG wire. Precision-crafted and ruggedly constructed of durable materials.

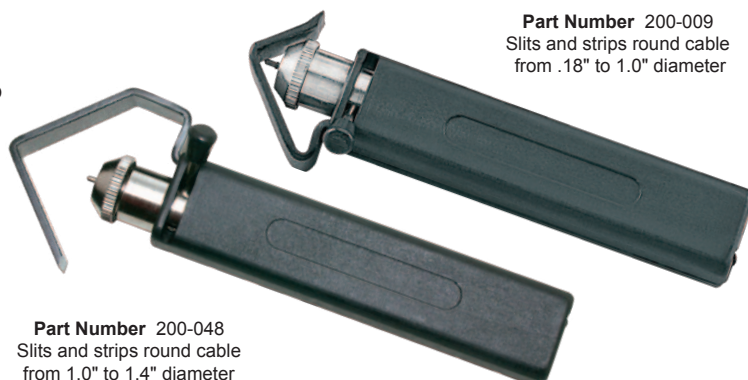
- Plier nose, cutter jaw, PVC handles, spring return
- Processed by CNC lathe for accurate size of notches
- Safety lock design for convenient storage



Rotary Cable Stripper/Slitters

Eclipse® Rotary Cable Stripper/Slitters strips and slits round cable.

- Adjustable cutting depth allows the blade to be set to penetrate just through the jacket for clean removal with no knicked conductors or lost stranding
- Swivel blade for ring, spiral, and longitudinal cuts
- Use the shaped tip to separate and pull away the slit jacket



Iroda® Automatic Ignition Butane Torch

The heavy duty **Pro-Torch™ Butane Torch** provides a powerful and stable butane flame for demanding jobs where the highest BTU output is required. Precision orifice and controls. The ergonomic grip makes using the PT-500 comfortable at most any angle.

- State of the art waterproof Piezo Electronic Ignition system
- Large fuel tank provides up to 200 minutes use on each filling
- Powerful high-output wind-resistant flame
- Sturdy heavy duty ribbed aluminum body with comfort grip
- Easily refilled with any brand of butane gas
- Flame adjustment for the most demanding applications



Part Number
PTB-500

Length: 4.73"
Height: 6.9"
Weight: 10.6 oz.

Iroda® Cordless Refillable Butane Heat Gun

The **Ultra-Therm Cordless Heat Gun** is designed for industrial use where high volume flameless heat is required. Its wide nozzle and high-output long life catalyst provide infinitely adjustable heat levels in a completely portable tool. Safe to use underhood where vapors may be present. Included deflector attachments make even heavy-wall shrink tubing a breeze to install. Use almost anywhere you would use a corded heat gun but without the cord!

- Instant-On Piezo Ignition with long life catalyst
- Rapid heat-up for immediate use
- High output element for demanding applications
- No cords to limit use
- Comfortable ergonomic grip
- Up to 120 minutes use on each fill
- Deflector circulates heat and protects nearby work
- Adjustable heat output



Part Number
UT-500

Length: 7.5"
Weight: 4.8 oz.

Iroda® Turbo-lite Butane Lighter and Torch

The elegant, multipurpose **Turbo-Lite Micro-Torch/Lighter** is designed for high style and function. Turbo-Lites are as useful as fully adjustable precision 1300°C (2400°F) torches as they are as reliable windproof lighters. Perfect as gifts or compact additions to the tool or emergency kit.

- 1300°C/2400°F pinpoint flame
- Piezo lifetime waterproof ignition system
- Simple twist flame adjustment
- Protective flip-open cap
- Stylish see-through fuel tank
- Five attractive colors
- Refills from standard butane fuel available everywhere



Part Number
MT-500

Length: 2.25"
Weight: 1.69 oz.

Portable Butane Heat Tools



The **Shrink Jet** flameless heat tool reaches temperatures up to 1250°F. Ideal for indoor and outdoor applications where open flame is not recommended.

Part Number
94700

Length: 6"
Weight: 3.4 oz



The **Micro-Jet** refillable open-flame butane heat tool is ideal for installing heat shrink tubing and connectors, making solder terminations, and many other applications.

Part Number
94800

Length: 5"
Weight: 3.2 oz

Heat Shrink Torch

Heat Shrink Torch screws directly onto 14 oz. and 16 oz. propane bottles with 1" connector. Cast aluminum body with durable, long lasting, baked-on epoxy finish, heavy-duty stainless steel burn tube. Push "ON" ignite button for instant starts. Air intake vent combines gas and air to provide the optimum flame setting. Regulator pressure for constant propane gas flow in any position. 1" wide brass burn-tip.



Part Number
HST-T1

Pro'sKit® Heat Gun and Accessories



Part Number
SS-611A

Dual-temperature Heat Gun is ideal for heat shrink, melting adhesives, curing epoxy, stripping paint and more. 1000°F (538°C) and 600°F (315°C) heat settings.

The included nozzle accessories concentrate the heat where needed. Molded case.

Pre-Measured Solder

Pre-Measured Solder pieces provide the correct amount of solder for each wire gauge. Color coded for easy cable size identification.

Solder Service Kit
available on
page 88



Part Number
Size



17900
4 AWG

17901
2 AWG

17902
1 AWG

17903
1/0

17904
2/0

17905
3/0

17906
4/0

Solder-It™ Low Temperature Solder Paste

Solder-It™ Solder Paste is easy to use—no skill required, no flux required. Joins 22 different combinations of metal and is five times stronger than ordinary solder. Finished joint is bright silver, and won't tarnish or blacken.

- Low melting point of 430°F—works with the heat of a match or lighter
- Can also be used with soldering iron, open flame, butane, propane, acetylene, or MAPP gas



Part Number
17999