

Arctic Ultraflex Blue® Premier Arctic Grade Wire

ARCTIC ULTRAFLEX BLUE®

Arctic Ultraflex Blue®

Arctic Ultraflex Blue® continues to be the premier **arctic grade** wire rated and proven to work in extreme temperature ranges of -55°C to 105°C. This highly flexible wire combines finely stranded copper construction with a durable jacket material that resists the abuses of oil and gasoline, sunlight, saltwater, acids, and chemicals.

Arctic Ultraflex Blue® is highly abrasion resistant and can be used in most 600 VOLT applications. UL Listed as AWM (Appliance Wiring Material).

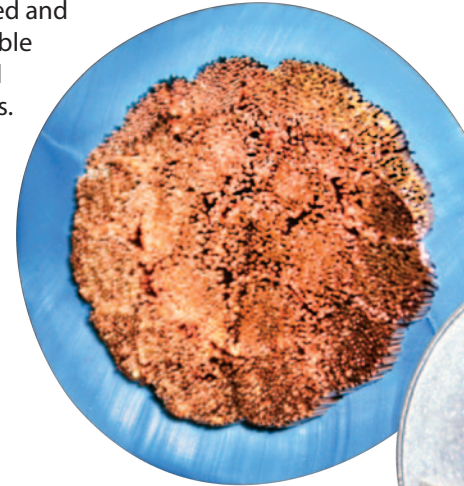
Arctic Ultraflex Blue® has numerous applications, including those approved under NEC article 400 and associated articles.

Applications

- UL 508A Industrial control panels
- Internal appliance and equipment wiring
- Inverter cables and wiring
- Industrial machines and robotics
- Construction equipment, forklifts, golf carts
- Marine, RV and automotive wiring
- Medium and heavy-duty trucks and trailers
- Load banks, motor leads, welding cable
- Batteries and chargers
- Power hookup cable



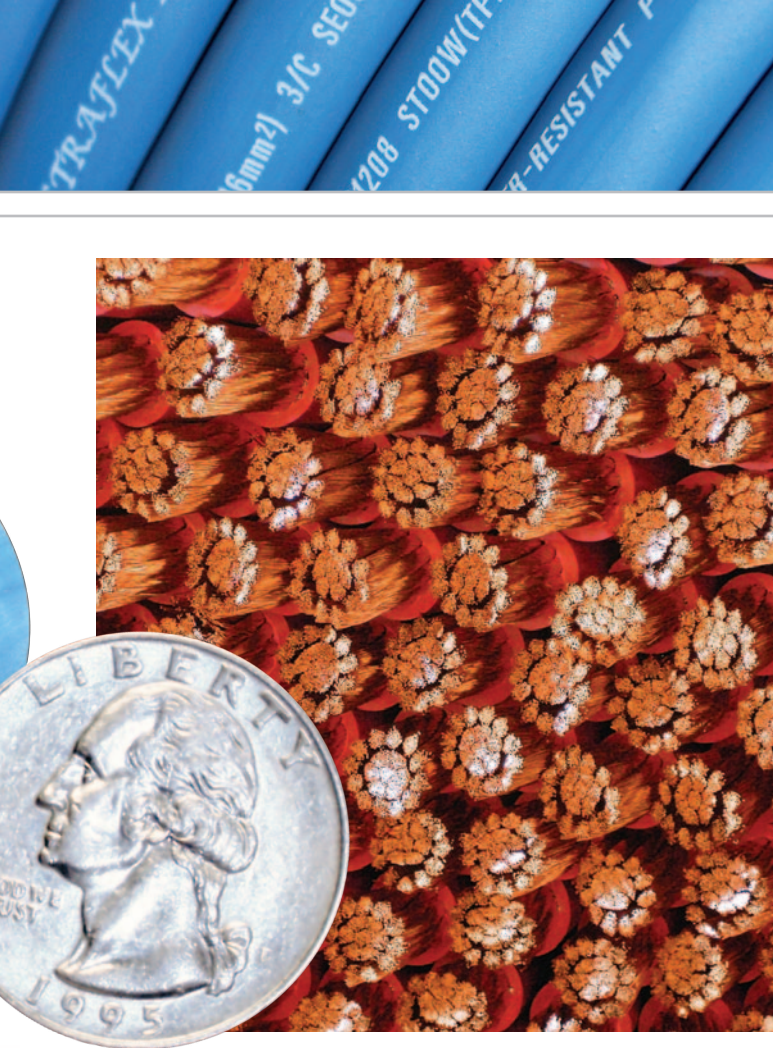
-55°C TO 105°C



Arctic Ultraflex Blue®

500 MCM - 5054/30
UL Class K Stranding
per conductor





Typical Legend

E196955  AWM 500MCM OIL RESISTANT 600V VW-1
 ... ARCTIC ULTRAFLEX BLUE® -55°C TO 105°C ...
 CSA 234608 TEW 105°C 600V FT1

Insulation Properties

Properties	Test Method	Performance
Specific Gravity (±.02)	ASTM D-792	1.30
Durometer Shore "A" (±.02) INST./15 seconds	ASTM D-2240	77/65
Tensile Strength (60 mil)	ASTM D-412	2000
Elongation (%)	ASTM D-412	300
Brittle Point (C)	ASTM D-746	-55°C
Oxygen Index %	ASTM D-2863	25.0
Oil Aged 18 Hours @ 121°C		
% Retention of Tensiles	UL Standard	129%
% Retention of Elongation	UL Standard	72%
Air Aged 7 Days @ 136°C		
% Retention of Tensiles	ASTM D412-80	109%
% Retention of Elongation	ASTM D412-80	100%
Oil Aged 7 Days @ 60°C		
% Retention of Tensiles	ASTM D412-80	124%
% Retention of Elongation	ASTM D412-80	89%
VW-1 Flame Test	UL Standard	Pass
Product Cold Bend Test	UL Standard	Pass
Voltage Rating	UL Standard	600

Class K Copper Stranded Construction Specifications

Size	Class K Copper Strand Qty/AWG	Class K Copper Strand Style	Nominal Conductor Outside Diameter	Insulation Thickness	Minimum Finished Outside Diameter	Ampacity* 30°C (86°F)	Ampacity* 40°C (104°F)
18 AWG	16/30	Tinned	.047"	.030"	.105"	n/a	n/a
16 AWG	26/30	Tinned	.059"	.030"	.118"	26	24
14 AWG	41/30	Tinned	.074"	.030"	.130"	38	36
12 AWG	65/30	Tinned	.093"	.030"	.150"	44	41
10 AWG	105/30	Tinned	.118"	.030"	.180"	60	56
8 AWG	168/30	Bare	.150"	.045"	.240"	85	81
6 AWG	266/30	Bare	.190"	.060"	.310"	115	106
4 AWG	420/30	Bare	.240"	.060"	.360"	150	142
2 AWG	665/30	Bare	.310"	.060"	.430"	205	193
1 AWG	836/30	Bare	.335"	.080"	.495"	240	223
1/0 AWG	1064/30	Bare	.390"	.080"	.550"	285	264
2/0 AWG	1330/30	Bare	.435"	.080"	.600"	325	304
3/0 AWG	1672/30	Bare	.490"	.080"	.650"	380	355
4/0 AWG	2109/30	Bare	.530"	.085"	.710"	440	411
250 MCM	2451/30	Bare	.685"	.095"	.875"	495	461
350 MCM	3458/30	Bare	.820"	.095"	1.010"	620	512
500 MCM	5054/30	Bare	.995"	.110"	1.220"	760	710

*Ampacities of 600V and 1000V 105°C AWM wires in air. **Note:** Ampacities based on single conductor in free air, 30°C (86°F) or 40°C (104°F) ambient temperature as specified, 105°C (221°F) conductor temperature, per table 310-17 of the NEC (adjusted for 105°C). Free air ratings assume a one-cable diameter spacing between adjacent conductors.

Polar Wire Products is the exclusive manufacturer
 of **Arctic Ultraflex Blue**®
 Premium Arctic Grade Wire



Arctic Ultraflex Blue® Single Conductor Wire

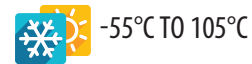
ARCTIC ULTRAFLEX BLUE®

Arctic Ultraflex Blue®

**Outstanding Flexibility
and Proven Performance
in Extreme Cold to -55°C**



- 100% copper flexible fine strand conductors are tinned for corrosion resistance and conductivity
- Ultraflexible, highly abrasion resistant jacket withstands water, salt, oil and gas, chemicals, sunlight
- Tested and proven in the harsh environment of Alaska's Arctic North Slope



12 AWG 1000' **Large spools and bulk quantities available**

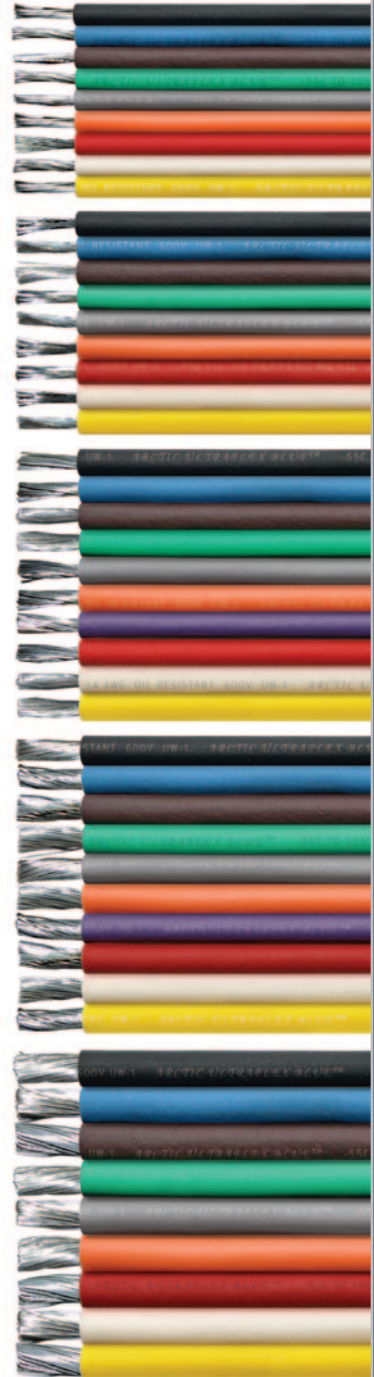


Single Conductor Wire 10 – 18 AWG

Arctic Ultraflex Blue® Finely Stranded Class K Tinned Copper

AWG	Stocked Wire Color	5000' Spool Part Number	2500' Spool Part Number	500' Spool Part Number	100' Spool Part Number	Clamshell Package Part Number	Length
18	● Black	AUF-18BLK	-	AUF-18BLK-500	AUF-18BLK-100	BP-18BLK	35'
18	● Blue	AUF-18BLU	-	AUF-18BLU-500	AUF-18BLU-100	BP-18BLU	35'
18	● Brown	AUF-18BRN	-	AUF-18BRN-500	AUF-18BRN-100	BP-18BRN	35'
18	● Green	AUF-18GRN	-	AUF-18GRN-500	AUF-18GRN-100	BP-18GRN	35'
18	● Gray	AUF-18GRY	-	AUF-18GRY-500	AUF-18GRY-100	BP-18GRY	35'
18	● Orange	AUF-18ORG	-	AUF-18ORG-500	AUF-18ORG-100	BP-18ORG	35'
18	● Red	AUF-18RED	-	AUF-18RED-500	AUF-18RED-100	BP-18RED	35'
18	○ White	AUF-18WHT	-	AUF-18WHT-500	AUF-18WHT-100	BP-18WHT	35'
18	● Yellow	AUF-18YEL	-	AUF-18YEL-500	AUF-18YEL-100	BP-18YEL	35'
16	● Black	AUF-16BLK	-	AUF-16BLK-500	AUF-16BLK-100	BP-16BLK	30'
16	● Blue	AUF-16BLU	-	AUF-16BLU-500	AUF-16BLU-100	BP-16BLU	30'
16	● Brown	AUF-16BRN	-	AUF-16BRN-500	AUF-16BRN-100	BP-16BRN	30'
16	● Green	AUF-16GRN	-	AUF-16GRN-500	AUF-16GRN-100	BP-16GRN	30'
16	● Gray	AUF-16GRY	-	AUF-16GRY-500	AUF-16GRY-100	BP-16GRY	30'
16	● Orange	AUF-16ORG	-	AUF-16ORG-500	AUF-16ORG-100	BP-16ORG	30'
16	● Red	AUF-16RED	-	AUF-16RED-500	AUF-16RED-100	BP-16RED	30'
16	○ White	AUF-16WHT	-	AUF-16WHT-500	AUF-16WHT-100	BP-16WHT	30'
16	● Yellow	AUF-16YEL	-	AUF-16YEL-500	AUF-16YEL-100	BP-16YEL	30'
14	● Black	AUF-14BLK	-	AUF-14BLK-500	AUF-14BLK-100	BP-14BLK	20'
14	● Blue	AUF-14BLU	-	AUF-14BLU-500	AUF-14BLU-100	BP-14BLU	20'
14	● Brown	AUF-14BRN	-	AUF-14BRN-500	AUF-14BRN-100	BP-14BRN	20'
14	● Green	AUF-14GRN	-	AUF-14GRN-500	AUF-14GRN-100	BP-14GRN	20'
14	● Gray	AUF-14GRY	-	AUF-14GRY-500	AUF-14GRY-100	BP-14GRY	20'
14	● Orange	AUF-14ORG	-	AUF-14ORG-500	AUF-14ORG-100	BP-14ORG	20'
14	● Purple	AUF-14PUR	-	AUF-14PUR-500	AUF-14PUR-100	BP-14PUR	20'
14	● Red	AUF-14RED	-	AUF-14RED-500	AUF-14RED-100	BP-14RED	20'
14	○ White	AUF-14WHT	-	AUF-14WHT-500	AUF-14WHT-100	BP-14WHT	20'
14	● Yellow	AUF-14YEL	-	AUF-14YEL-500	AUF-14YEL-100	BP-14YEL	20'
12	● Black	-	AUF-12BLK	AUF-12BLK-500	AUF-12BLK-100	BP-12BLK	15'
12	● Blue	-	AUF-12BLU	AUF-12BLU-500	AUF-12BLU-100	BP-12BLU	15'
12	● Brown	-	AUF-12BRN	AUF-12BRN-500	AUF-12BRN-100	BP-12BRN	15'
12	● Green	-	AUF-12GRN	AUF-12GRN-500	AUF-12GRN-100	BP-12GRN	15'
12	● Gray	-	AUF-12GRY	AUF-12GRY-500	AUF-12GRY-100	BP-12GRY	15'
12	● Orange	-	AUF-12ORG	AUF-12ORG-500	AUF-12ORG-100	BP-12ORG	15'
12	● Purple	-	AUF-12PUR	AUF-12PUR-500	AUF-12PUR-100	BP-12PUR	15'
12	● Red	-	AUF-12RED	AUF-12RED-500	AUF-12RED-100	BP-12RED	15'
12	○ White	-	AUF-12WHT	AUF-12WHT-500	AUF-12WHT-100	BP-12WHT	15'
12	● Yellow	-	AUF-12YEL	AUF-12YEL-500	AUF-12YEL-100	BP-12YEL	15'
10	● Black	-	AUF-10BLK	AUF-10BLK-500	AUF-10BLK-100	BP-10BLK	10'
10	● Blue	-	AUF-10BLU	AUF-10BLU-500	AUF-10BLU-100	BP-10BLU	10'
10	● Brown	-	AUF-10BRN	AUF-10BRN-500	AUF-10BRN-100	BP-10BRN	10'
10	● Green	-	AUF-10GRN	AUF-10GRN-500	AUF-10GRN-100	BP-10GRN	10'
10	● Gray	-	AUF-10GRY	AUF-10GRY-500	AUF-10GRY-100	BP-10GRY	10'
10	● Orange	-	AUF-10ORG	AUF-10ORG-500	AUF-10ORG-100	BP-10ORG	10'
10	● Red	-	AUF-10RED	AUF-10RED-500	AUF-10RED-100	BP-10RED	10'
10	○ White	-	AUF-10WHT	AUF-10WHT-500	AUF-10WHT-100	BP-10WHT	10'
10	● Yellow	-	AUF-10YEL	AUF-10YEL-500	AUF-10YEL-100	BP-10YEL	10'

Bulk quantities available upon request



Red and Black 14, 16, and 18 AWG are also stocked in 1000' spools, other colors on request

ARCTIC ULTRAFLEX BLUE®

Arctic Ultraflex Blue® Single Conductor Wire

ARCTIC ULTRAFLEX BLUE®

Arctic Ultraflex Blue®

E196955 9A AWM 8 AWG OIL RESISTANT 600V UU-1 ... ARCTIC ULTRAFLEX BLUE™ -55°C TO 105°C ... CSA 234608 TEW 105°C 600V FT1

8 AWG

E196955 9A AWM 8 AWG OIL RESISTANT 600V UU-1 ... ARCTIC ULTRAFLEX BLUE™ -55°C TO 105°C ... CSA 234608 TEW 105°C 600V FT1

8 AWG

E196955 9A AWM 6 AWG OIL RESISTANT 600V UU-1 ... ARCTIC ULTRAFLEX BLUE™ -55°C TO 105°C ... CSA 234608 TEW 105°C 600V FT1

6 AWG

E196955 9A AWM 6 AWG OIL RESISTANT 600V UU-1 ... ARCTIC ULTRAFLEX BLUE™ -55°C TO 105°C ... CSA 234608 TEW 105°C 600V FT1

6 AWG

E196955 9A AWM 4 AWG OIL RESISTANT 600V VW-1 ... ARCTIC ULTRAFLEX BLUE™ -55°C TO 105°C ... CSA 234608 TEW 105°C 600V FT1

4 AWG

E196955 9A AWM 4 AWG OIL RESISTANT 600V VW-1 ... ARCTIC ULTRAFLEX BLUE™ -55°C TO 105°C ... CSA 234608 TEW 105°C 600V FT1

4 AWG

E196955 9A AWM 2 AWG OIL RESISTANT 600V VW-1 ... ARCTIC ULTRAFLEX BLUE™ -55°C TO 105°C ... CSA 234608 TEW 105°C 600V FT1

2 AWG

E196955 9A AWM 1/0 AWG OIL RESISTANT 600V VW-1 ... ARCTIC ULTRAFLEX BLUE™ -55°C TO 105°C ... CSA 234608 TEW 105°C 600V FT1

1/0 AWG

E196955 9A AWM 2/0 AWG OIL RESISTANT 600V VW-1 ... ARCTIC ULTRAFLEX BLUE™ -55°C TO 105°C ... CSA 234608 TEW 105°C 600V FT1

2/0 AWG

E196955 9A AWM 4/0 AWG OIL RESISTANT 600V VW-1 ... ARCTIC ULTRAFLEX BLUE™ -55°C TO 105°C ... CSA 234608 TEW 105°C 600V FT1

4/0 AWG

E196955 9A AWM 250 MCM AWG OIL RESISTANT 600V VW-1 ... ARCTIC ULTRAFLEX BLUE™ -55°C TO 105°C ... CSA 234608 TEW 105°C 600V FT1

250 MCM

E196955 9A AWM 500 MCM AWG OIL RESISTANT 600V VW-1 ... ARCTIC ULTRAFLEX BLUE™ -55°C TO 105°C ... CSA 234608 TEW 105°C 600V FT1

500 MCM

Single Conductor Wire 8 AWG – 500 MCM

ARCTIC ULTRAFLEX BLUE®

Arctic Ultraflex Blue® Wire Colors

8 AWG through 500 MCM is sold by the foot—coiled in lengths up to 100', and spooled in lengths over 100'.

Part Number	Size	Stocked Wire Color
AUF-8BLK	8 AWG	● Black
AUF-8BLU	8 AWG	● Blue
AUF-8RED	8 AWG	● Red
AUF-8WHT	8 AWG	○ White
AUF-8GRN	8 AWG	● Green
AUF-8GRN/YEL	8 AWG	● Green/Yellow Stripe
AUF-6BLK	6 AWG	● Black
AUF-6BLU	6 AWG	● Blue
AUF-6RED	6 AWG	● Red
AUF-6WHT	6 AWG	○ White
AUF-6GRN	6 AWG	● Green
AUF-6GRN/ORG	6 AWG	● Green/Orange Stripe
AUF-4BLK	4 AWG	● Black
AUF-4BLU	4 AWG	● Blue
AUF-4RED	4 AWG	● Red
AUF-4WHT	4 AWG	○ White
AUF-4GRN	4 AWG	● Green
AUF-4GRN/YEL	4 AWG	● Green/Yellow Stripe
AUF-2BLK	2 AWG	● Black
AUF-2BLU	2 AWG	● Blue
AUF-2RED	2 AWG	● Red
AUF-2WHT	2 AWG	○ White
AUF-2GRN	2 AWG	● Green
AUF-2GRN/ORG	2 AWG	● Green/Orange Stripe
AUF-2GRN/YEL	2 AWG	● Green/Yellow Stripe
AUF-1BLK	1 AWG	● Black
AUF-1RED	1 AWG	● Red
AUF-1OBLK	1/0 AWG	● Black
AUF-1OBLU	1/0 AWG	● Blue
AUF-1ORED	1/0 AWG	● Red
AUF-2OBLK	2/0 AWG	● Black
AUF-2OBLU	2/0 AWG	● Blue
AUF-2ORED	2/0 AWG	● Red
AUF-3OBLK	3/0 AWG	● Black
AUF-3ORED	3/0 AWG	● Red
AUF-4OBLK	4/0 AWG	● Black
AUF-4OBLU	4/0 AWG	● Blue
AUF-4ORED	4/0 AWG	● Red
AUF-250MCM	250 MCM	● Blue
AUF-500MCMBLK	500 MCM	● Black
AUF-500MCMBLU	500 MCM	● Blue



-55°C TO 105°C

Custom colors and striping available on request — minimums apply

WIRE STRANDING COMPARISON CHART

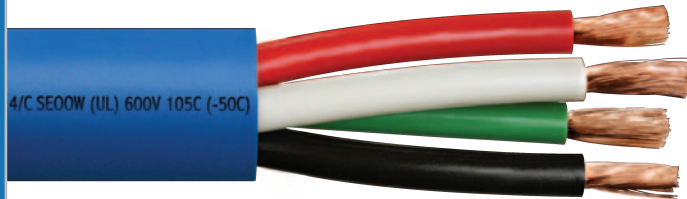
Polar Wire Standard

Class B Stranding		Class C Stranding		Class G Stranding		Class H Stranding		Class I Stranding		Class K Stranding		Class M Stranding		Locomotive Cable	
Stranding	OD	Stranding	OD	Stranding	OD	Stranding	OD	Stranding	OD	Stranding	OD	Stranding	OD	Stranding	OD
2/0 / 19	.4205	2/0 / 37	.3750	1/0 / 133	.4240	1/0 / 259	.4240	N/A	-	N/A	-	1/0 / 2646	.4310	1/0 / 275	.4200
3/0 / 19	.4700	3/0 / 37	.4700	2/0 / 133	.4740	2/0 / 259	.4770	1/0 / 266	.4320	1/0 / 1064	.3900	N/A	-	2/0 / 325	.4600
4/0 / 19	.5280	4/0 / 37	.5300	3/0 / 133	.5330	3/0 / 259	.5330	2/0 / 342	.4700	2/0 / 1330	.4350	2/0 / 3325	.4600	N/A	-
250 MCM / 37	.5720	250 MCM / 61	.5760	N/A	-	N/A	-	3/0 / 418	.5450	3/0 / 1672	.4900	3/0 / 4256	.5750	3/0 / 450	.5650
350 MCM / 37	.6850	350 MCM / 61	.6813	250 MCM / 259	.6500	250 MCM / 427	.6530	250 MCM / 637	.6800	4/0 / 2109	.5300	4/0 / 5320	.6450	262.6 MCM / 650	.6500
400 MCM / 37	.8250	400 MCM / 61	.7290	300 MCM / 259	.7140	300 MCM / 427	.7160	300 MCM / 735	.7218	250 MCM / 2451	.6850	250 MCM / 6384	.6480	313.1 MCM / 775	.7100
500 MCM / 37	.8100	500 MCM / 61	.8145	350 MCM / 259	.7730	350 MCM / 427	.7720	350 MCM / 882	.8830	300 MCM / 2989	.7700	300 MCM / 7581	.8108	N/A	-
N/A	-	N/A	-	400 MCM / 259	.8260	400 MCM / 427	.8260	400 MCM / 980	.8380	350 MCM / 3458	.8200	350 MCM / 8806	.8822	373.7 MCM / 925	1.140
700 MCM / 61	.9640	700 MCM / 91	.9647	500 MCM / 259	.9220	500 MCM / 427	.9230	500 MCM / 1225	.9400	450 MCM / 4522	1.008	450 MCM / 11396	.9400	535.3 MCM / 1325	1.320
750 MCM / 61	.9980	750 MCM / 91	.9988	550 MCM / 427	.9230	550 MCM / 703	.9230	550 MCM / 1372	.9910	500 MCM / 5054	1.022	500 MCM / 12691	.9970	N/A	-
N/A	-	N/A	-	600 MCM / 427	.9690	600 MCM / 703	1.022	600 MCM / 1470	1.101	550 MCM / 5453	1.099	550 MCM / 13664	1.198	646.4 MCM / 1600	1.450
1000 MCM / 61	1.160	1000 MCM / 91	1.208	750 MCM / 427	1.131	750 MCM / 703	1.320	650 MCM / 1596	1.089	600 MCM / 5985	1.160	600 MCM / 14945	1.280	N/A	-

Arctic Ultraflex Blue® Power Cord

ARCTIC ULTRAFLEX BLUE®

Arctic Ultraflex Blue® Power Cord (-50° to 105°C)



Features

- Flexible, tough TPE jacket
- Works under temperature extremes of -50°C to 105°C
- Color coded conductors for easy identification
- Excellent abrasion and cut resistance
- Ozone, sunlight, and water resistant with high dielectric insulation
- Water and mold resistant non-wicking polypropylene fillers
- Lightweight, long lasting, easy to carry and handle
- All components are recyclable and non-hazardous for environmental landfill disposal



-55°C TO 105°C

Applications

- Suitable for and approved for submersion in water
- Special uses requiring flexibility and mechanical toughness, high environmental resistance and flame retardance
- Motor control, stage equipment and lighting
- Pendant push button remote controls
- Industrial control and robotic systems
- Machine and power tools
- Portable power
- Dockside power applications
- Mining and outdoor applications



Industry Approvals

- Federal and Military use under Federal Spec. JC-580B
- UL Listed SE00W 600V and SJEOOW 300V for NEC Article 400
- CSA Certified ST00W or SJTOOW (TPE) -50°C to 105°C
- P-241-3-MSHA approval for flame resistance and mining applications



600V Power Cord 18 – 4 AWG

Part Number	Gauge/Number of Conductors	Stranding Quantity/AWG	Nominal Outside Diameter	Amps**
AUF-182*	18/2	16/30	.345"	10
AUF-183*	18/3	16/30	.365"	10
AUF-184	18/4	16/30	.395"	7
AUF-185	18/5	16/30	.465"	5.6
AUF-162	16/2	26/30	.370"	13
AUF-163	16/3	26/30	.390"	13
AUF-164	16/4	26/30	.420"	10
AUF-165*	16/5	26/30	.495"	8
AUF-142*	14/2	41/30	.505"	18
AUF-143	14/3	41/30	.525"	18
AUF-144	14/4	41/30	.575"	15
AUF-145*	14/5	41/30	.652"	12
AUF-122*	12/2	65/30	.570"	25
AUF-123	12/3	65/30	.595"	25
AUF-124	12/4	65/30	.645"	20
AUF-125	12/5	65/30	.710"	16
AUF-102*	10/2	104/30	.655"	30
AUF-103	10/3	104/30	.662"	30
AUF-104	10/4	104/30	.705"	25
AUF-105*	10/5	104/30	.771"	20
AUF-84	8/4	7x24/30	.925"	35
AUF-64	6/4	7x37/30	1.038"	45
AUF-44*	4/4	7x60/30	1.232"	60

300V Junior Power Cord 18 – 12 AWG

Part Number	Conductor AWG/Qty	Stranding Qty/AWG	Nominal Outside Diameter	Amps**
AUF-183J	18/3	16/30	.310"	10
AUF-163J	16/3	26/30	.330"	13
AUF-143J	14/3	41/30	.370"	18
AUF-123J	12/3	65/30	.435"	25

***Special order only (minimums apply)**

**Ampacity based on NEC Table 400.5 (A) and CEC Table 12

Note: The ampacity chart is provided for engineering information only. Polar Wire Products, Inc. cannot recommend or express the use of these ampacities since the exact application may need approval from the authority having local jurisdiction. This information is subject to engineering changes. Cold temperature rating is -50°C.

Jacket Color Blue

Conductors 18 through 10 AWG Stranded Bare Copper

Conductor Colors
 2/C – black, white
 3/C – black, white, green
 4/C – black, white, red, green
 5/C – black, white, red, green, orange

Typical Legend
Arctic Ultraflex Blue® E224869
 16 AWG (1.31mm²) 2/C SE00W (UL) 600V 105C (-50C) -- CSA 265576 SE00W 600V 105C (-50C) FT2 WATER RESISTANT



Arctic Ultraflex Blue Extreme Power Cord was originally developed for use in the University of Wisconsin-Madison IceCube Project in Antarctica. NSF photo.

Extreme Power Cord (-70° to 105°C)

ARCTIC ULTRAFLEX BLUE®

Extreme Power Cord 8 – 2 AWG

Extreme Power Cord is available by special order only (minimums apply)

Part Number	Gauge/Number of Conductors	Stranding Quantity/AWG	Nominal Outside Diameter	Amps**
AUFX-83*	8/3	96/28	.700"	40
AUFX-84*	8/4	96/28	.783"	35
AUFX-85*	8/5	96/28	.850"	28
AUFX-63*	6/3	96/26	.818"	55
AUFX-64*	6/4	96/26	.892"	45
AUFX-65*	6/5	96/26	.992"	36
AUFX-43*	4/3	96/24	.911"	70
AUFX-44*	4/4	96/24	1.014"	60
AUFX-45*	4/5	96/24	1.203"	48
AUFX-23*	2/3	7x7/.0223	1.158"	95
AUFX-24*	2/4	7x7/.0223	1.267"	80
AUFX-25*	2/5	7x7/.0223	1.389"	64

*Special order only (minimums apply)

**Ampacity based on NEC Table 400.5 (A)

Note: Sizes 8/3 up to 2/5 are non-UL constructions made with wall thicknesses in accordance with industry standards and MSHA Approved.

Note: The ampacity chart is provided for engineering information only. Polar Wire Products, Inc. cannot recommend or express the use of these ampacities since the exact application may need approval from the authority having local jurisdiction. This information is subject to engineering changes. Cold temperature rating is -70°C.

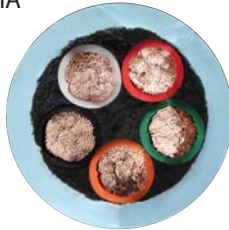
Jacket Color Light Blue

Conductors 8 through 2 AWG Stranded Bare Copper

Conductor Colors
 3/C - black, white, red
 4/C - black, white, red, green
 5/C - black, white, red, green, orange

Typical Legend **Arctic Ultraflex Blue®** 2-5 SEOWW
 600V 105°C (-70°C) WATER-RESISTANT
 P-241-3-MSHA

-70°C TO 105°C



Features

- Flexible, tough jacket
- Works well in temperature extremes of -70°C to 105°C
- Color coded conductors for easy identification
- Excellent abrasion and cut resistance
- Ozone, sunlight, and water resistant with high dielectric insulation
- Water and mold resistant non-wicking polypropylene fillers
- Lightweight, long lasting, easy to carry and handle
- All components are recyclable and non-hazardous for environmental landfill disposal

Applications

- Uses requiring flexibility and mechanical toughness, high environmental resistance and flame retardance
- Suitable and approved for submersion in water
- On and offshore drilling
- Construction, industry, research
- Mining and outdoor applications
- Docksides power applications
- Industrial control and robotic systems and equipment
- Motor control, lighting, push button remote controls
- Machine and power tools
- Portable power, mobile power
- Extreme power cording



Industry Approvals

- Federal and Military use under Federal Spec. JC-580B
- Manufactured to UL SEOWW 600V and CSA Certified STOOW (TPE) standards
- MSHA approval for flame resistance and mining applications



Arctic Ultraflex Blue® Extension Cords

ARCTIC ULTRAFLEX BLUE®

Arctic Ultraflex Blue®

Designed for unbeatable performance in the most demanding conditions

Tough, durable Polar Wire **Extension Cords** are designed for ease of handling and superior performance in cold weather applications. The SEOOW-designated **Arctic Ultraflex Blue®** jacket remains flexible to -50°C and won't become stiff or crack, even in extreme temperatures. **Arctic Ultraflex Blue®** has excellent abrasion resistance and withstands oils, greases, gas, salt, sunlight, and chemicals. Clear NEMA 5-15 and 5-20 molded ends with steel retention rings light to provide instant power verification. Polar Wire extension cords are available in a variety of length and gauge configurations, or specify custom sizes and colors to suit your needs.

- Our rugged cords **OUTPERFORM** and **OUTLAST** the imitators
- Proven dependable in the worst winter weather
- Industrial grade, contractor quality
- Heavy duty molded-in blades fit tightly so water won't penetrate
- **Arctic Ultraflex Blue®** power cords are exceptionally easy to handle—won't tangle or kink

**PROUDLY MADE
IN THE USA**



Typical Cord Legend

Arctic Ultraflex Blue® E224869
W 12 AWG (3.31mm²) 3/C SEOOW (UL)
600V 105C (-50C) -- CSA 265576 SEOOW
600V 105C (-50C) FT2 WATER-RESISTANT

Features

- Superior flexibility to -50°C (-58°F)
- Class K fine stranded copper construction
- Resists oil, grease, chemicals, abrasion, sunlight and weather
- Clear NEMA 5-15 and 5-20 molded ends light when energized
- Steel retention rings provide extra security and strain relief
- Reinforced blades and pins
- UL and CSA Approved
- Flame retardant (VW-1)
- Environmentally safe
- Made in the USA



CLOSEOUT!

LIMITED TO STOCK ON HAND

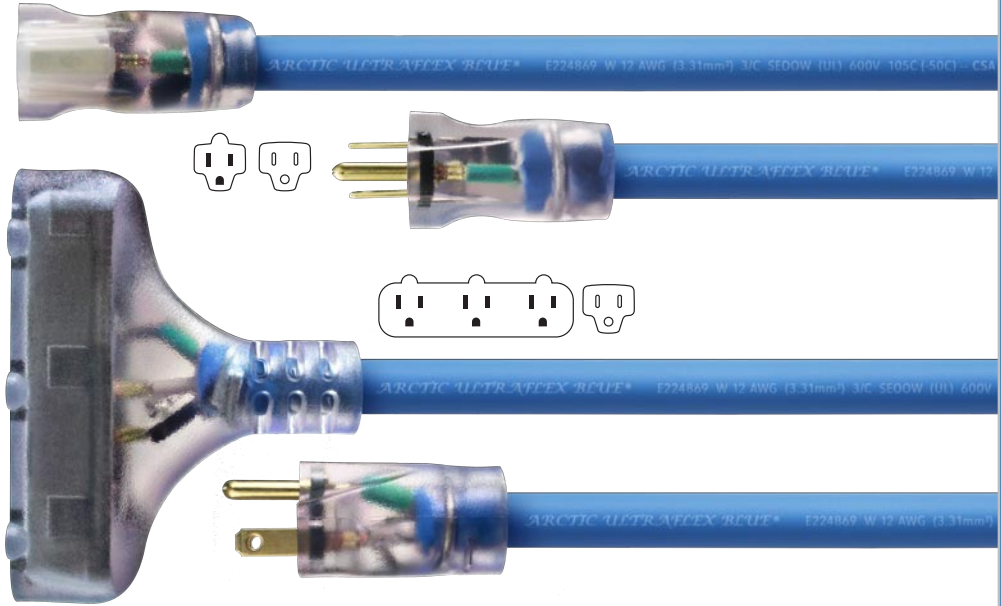
Arctic Ultraflex Blue®
is used extensively on Alaska's
Arctic North Slope

NEMA 5-15 Extension Cords

Single Outlet NEMA 5-15

Part Number	AWG	Length
AUF-PC12-10	12	10'
AUF-PC12-25	12	25'
AUF-PC12-50	12	50'
AUF-PC12-100	12	100'
AUF-PC14-10*	14	10'
AUF-PC14-25*	14	25'
AUF-PC14-50*	14	50'
AUF-PC14-100*	14	100'
AUF-PC16-10	16	10'
AUF-PC16-25*	16	25'
AUF-PC16-50*	16	50'

*Special order (minimums apply)



Triple Outlet NEMA 5-15

Part Number	AWG	Length
AUF-PCT12-3	12	3'
AUF-PCT12-10	12	10'
AUF-PCT12-25	12	25'
AUF-PCT12-50	12	50'
AUF-PCT12-100	12	100'

NEMA 5-20 Extension Cords

Single Outlet NEMA 5-20

Part Number	AWG	Length
AUF-PC10-25	10	25'
AUF-PC10-50	10	50'
AUF-PC10-100	10	100'

 -50°C TO 105°C



CLOSEOUT!

LIMITED TO STOCK ON HAND



Multi-Conductor Boat Cable

Round and Flat Triplex Boat Cable

Polar Wire's exclusive UL Listed premium multi-conductor **Boat Cable** is designed for outstanding performance and corrosion protection in harsh marine environments.

100% copper Class K stranding provides exceptional flexibility, eases installation and reduces fatigue from vibration and flexing.

Features

- UL listed Tinned Copper Boat Cable
- 10, 12, 14, and 16 AWG **Triplex** with black, white, and green conductor colors
- 6, 8, 10, 12, 14, 16, and 18 AWG **DC Duplex** with red/black or red/yellow conductors
- Ultra-flexible Class K fine stranding
- Tinned for protection against corrosion and electrolysis
- Designed specifically for easier handling and installation in cramped spaces
- Opt for round cable for best all-direction bending ability, or choose the space saving flat profile for tight spaces and stacking
- Flat profile is constructed without fillers to facilitate jacket removal and wire stripping
- Resists saltwater, oil and gasoline, heat, sunlight, abrasion
- 600 volts up to 221°F (105°C) dry, 167°F (75°C) wet
- Flexible in cold conditions
- Manufactured by Polar Wire in the USA



Marine grade **Triplex Boat Cable** is configured in round and flat profiles with black, white, and green conductors and white TPE outer jacket. 100% copper Class K fine stranded conductors are ultra flexible and tinned for maximum corrosion resistance and long performance. Construction meets and exceeds UL 1426, CSA, and ABYC standards.

Rated for 600 volts, 105°C dry, 75°C wet. Durable jackets resist salt water, oil, gas, sunlight, heat, and abrasion.



Typical Legend

POLAR WIRE BOAT CABLE E321438 (UL) 10 AWG 3/COND VW-1 600V 105C DRY 75C WET OIL RESISTANT BC5W2 MADE IN USA RoHS COMPLIANT — CSA TEW 105C OR AWM I A/B 105C 600V FT1 265576

Flat Black/White/Green Triplex

Part Number 100' Spool	Part Number 500' Spool	Conductor AWG/Qty
BLACK, WHITE, AND GREEN CONDUCTORS		
BCF163-100	BCF163-500	16/3
BCF143-100	BCF143-500	14/3
BCF123-100	BCF123-500	12/3
BCF103-100	BCF103-500	10/3



10 AWG FLAT

Round Black/White/Green Triplex

Part Number 100' Spool	Part Number 500' Spool	Conductor AWG/Qty
BLACK, WHITE, AND GREEN CONDUCTORS		
BCR163-100	BCR163-500	16/3
BCR143-100	BCR143-500	14/3
BCR123-100	BCR123-500	12/3
BCR103-100	BCR103-500	10/3



10 AWG ROUND



TO 105°C DRY, 75°C WET



Round and Flat DC Duplex Boat Cable

Marine grade **DC Duplex Boat Cable** is constructed with 100% copper ultra flexible Class K fine stranding, tinned for maximum corrosion resistance and long performance. **DC Duplex** is configured in flat and round profiles with ABYC recommended red insulated (DC positive) and yellow insulated (DC negative) conductors, or in flat profile with red and black conductors. White TPE outer jacket. Construction meets and exceeds UL 1426, CSA, and ABYC standards.

Rated 600 volts, 105°C dry, 75°C wet. Resists vibration and flexing fatigue, oil, gas, salt water, sun, heat, and abrasion. Manufactured in the USA by Polar Wire.

Typical Legend

POLAR WIRE BOAT CABLE E321438
(UL) 8 AWG 2/COND VW-1 600V 105C
DRY 75C WET OIL RESISTANT BC5W2
MADE IN USA RoHS COMPLIANT —
CSA TEW 105C OR AWM
I A/B 105C 600V
FT1 265576



Flat Red/Black DC Duplex

Part Number 100' Spool	Part Number 500' Spool	Conductor AWG/Qty
---------------------------	---------------------------	----------------------

RED AND BLACK CONDUCTORS

BCF182RB-100	BCF182RB-500	18/2
BCF162RB-100	BCF162RB-500	16/2
BCF142RB-100	BCF142RB-500	14/2
BCF122RB-100	BCF122RB-500	12/2
BCF102RB-100	BCF102RB-500	10/2
BCF82RB-100	-	8/2
BCF62RB-100	-	6/2



8 AWG FLAT

Flat Safety Yellow/Red DC Duplex

Part Number 100' Spool	Part Number 500' Spool	Conductor AWG/Qty
---------------------------	---------------------------	----------------------

YELLOW AND RED CONDUCTORS

BCF182YR-100	BCF182YR-500	18/2
BCF162YR-100	BCF162YR-500	16/2
BCF142YR-100	BCF142YR-500	14/2
BCF122YR-100	BCF122YR-500	12/2
BCF102YR-100	BCF102YR-500	10/2
BCF82YR-100	-	8/2
BCF62YR-100	-	6/2



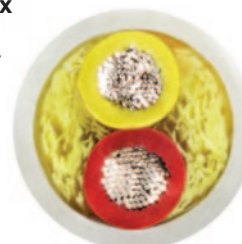
10 AWG FLAT

Round Safety Yellow/Red DC Duplex

Part Number 100' Spool	Part Number 500' Spool	Conductor AWG/Qty
---------------------------	---------------------------	----------------------

YELLOW AND RED CONDUCTORS

BCR182YR-100	BCR182YR-500	18/2
BCR162YR-100	BCR162YR-500	16/2
BCR142YR-100	BCR142YR-500	14/2
BCR122YR-100	BCR122YR-500	12/2
BCR102YR-100	BCR102YR-500	10/2



10 AWG ROUND

TO 105°C DRY, 75°C WET



Arctic Ultraflex Blue® Twin and Multi-Conductor Trailer Cable

WIRE AND CABLE

Arctic Ultraflex Blue® Twin Trailer Cable

Arctic Ultraflex Blue® Trailer Cable is manufactured exclusively by Polar Wire Products using our arctic grade jacket material that is ultra flexible, lightweight, abrasion resistant and chemical, oil, gas and water resistant. Conductors are Class K fine stranded 100% copper, tinned for corrosion resistance. Designed to perform in extreme cold weather, Polar Wire Trailer Cable stays flexible in extreme temperatures of -55° to 105°C.

Arctic Ultraflex Blue® Twin Trailer Cable features red and black tinned conductors and is available in sizes 18 through 10 AWG.

Features

- Finely stranded 100% Copper
- Tinned for corrosion resistance
- Flexible to -55°C (-67°F)
- 600 Volt rated
- Industry standard colors
- Exceeds SAE standards
- Resists acids, chemicals, oil, gas, sunlight, salt, water

Applications

- Trailer wiring
- DC power needs
- Solar panel and tracker wiring
- Renewable energy projects
- Robotics and related equipment



Typical Legend

ARCTIC ULTRAFLEX 14 AWG POWER & CONTROL TRAY CABLE TYPE TC 600V SUN RES



AUF-TC182



AUF-TC162



AUF-TC142



AUF-TC122



AUF-TC102



AUF-TC122

Twin Trailer

Gray outer jacket



-55°C TO 105°C

Part Number	Conductor Size	Qty	Colors
AUF-TC182	18 AWG	2	Black, Red
AUF-TC162	16 AWG	2	Black, Red
AUF-TC142	14 AWG	2	Black, Red
AUF-TC122	12 AWG	2	Black, Red
AUF-TC102	10 AWG	2	Black, Red



*Custom colors and configurations available — minimums may apply
Contact us for special orders and lead times*

Arctic Ultraflex Blue® Multi-Conductor Trailer Cable

Arctic Ultraflex Blue® Multi-Conductor Trailer Cable is made with 100% copper conductors in 4 and 7 conductor configurations. Class K fine stranded conductors are tinned to resist corrosion (AUF-TC101214-7 is bare copper).

Multi-Conductor Trailer Cable is designed for superior flexibility and long performance in extreme temperatures of -55° to 105°C. 600 Volts. Available by the foot.

Features

- Finely stranded 100% Copper
- Tinned (except AUF-TC1014-7)
- Flexible to -55°C (-67°F)
- Industry standard colors
- Exceeds SAE standards
- Resists acids, chemicals, oil and gas, sunlight, salt, water

Applications

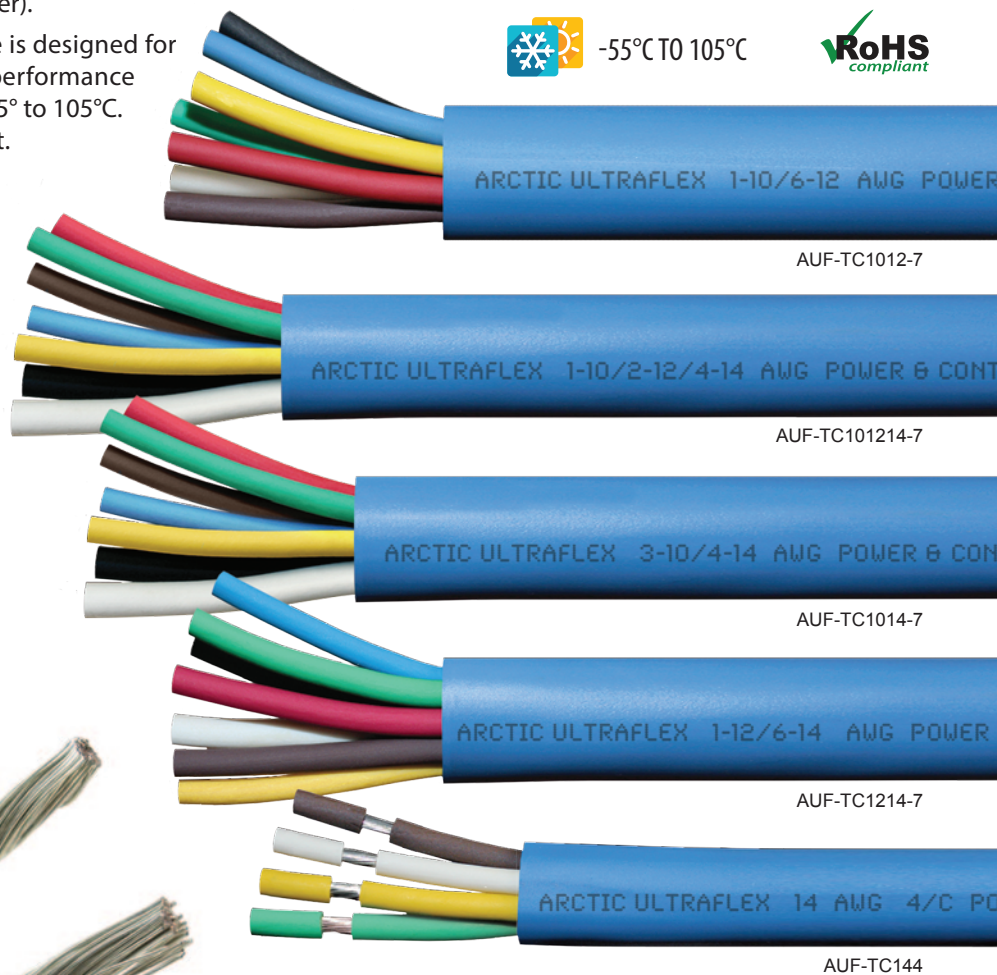
- Trailer wiring, DC power needs
- Solar panel and tracker wiring
- Renewable energy projects
- Robotics and related equipment

Typical Legend

ARCTIC ULTRAFLEX 1-12/6-14 AWG POWER & CONTROL TRAY CABLE TYPE TC 600V SUN RES



-55°C TO 105°C



AUF-TC1012-7



Multi-Conductor Trailer

Blue outer jacket

Part Number	Qty	Conductors	
		Size	Color
AUF-TC1012-7	1	10 AWG	White
	6	12 AWG	Black, Red, Blue, Green, Yellow, Brown
AUF-TC101214-7	1	10 AWG	White
	2	12 AWG	Black, Red
	4	14 AWG	Blue, Green, Yellow, Brown
AUF-TC1014-7 (Bare Copper)	3	10 AWG	White, Black, Red
	4	14 AWG	Black, Red, Blue, Green, Yellow, Brown
AUF-TC1214-7	1	12 AWG	White
	6	14 AWG	Black, Red, Blue, Green, Yellow, Brown
AUF-TC144	4	14 AWG	White, Green, Yellow, Brown